



MARTIN COUNTY
Community Redevelopment Agency



MAPP ROAD TOWN CENTER

Florida Redevelopment Association
2022 "Best Book" Award
Capital Project/Infrastructure

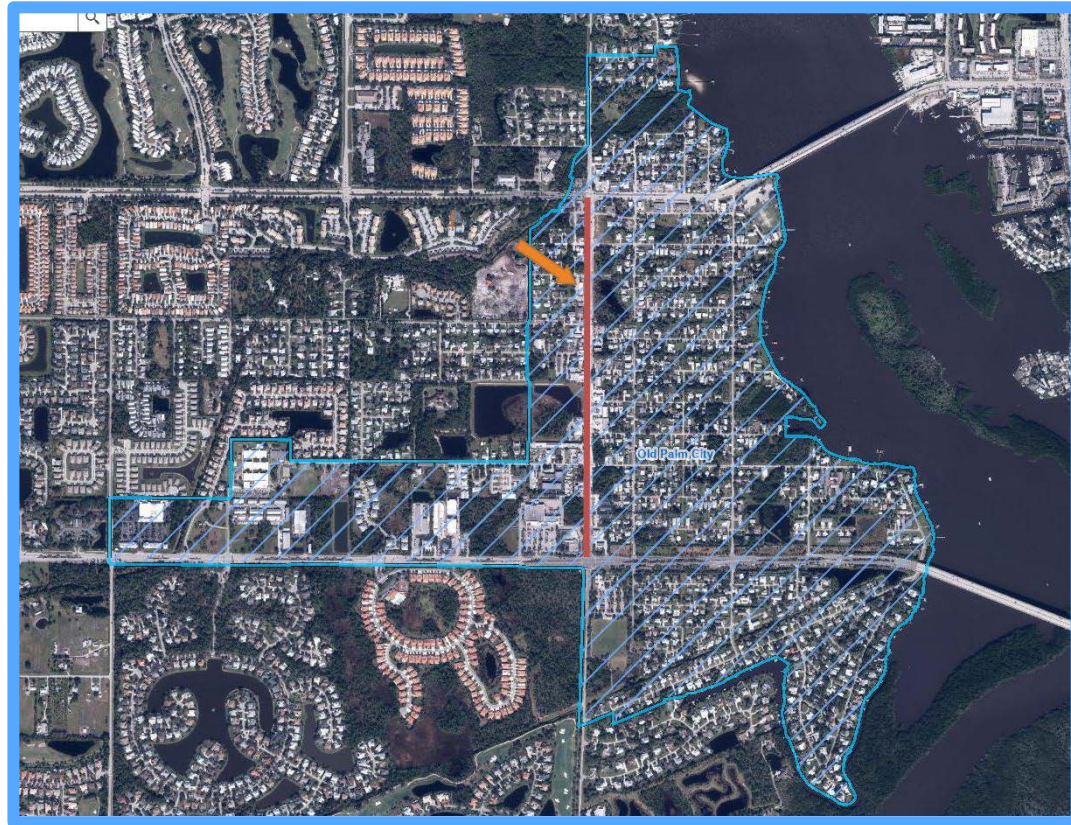


THE VISION



GOLDEN GATE HOBE SOUND JENSEN BEACH OLD PALM CITY PORT SALERNO RIO





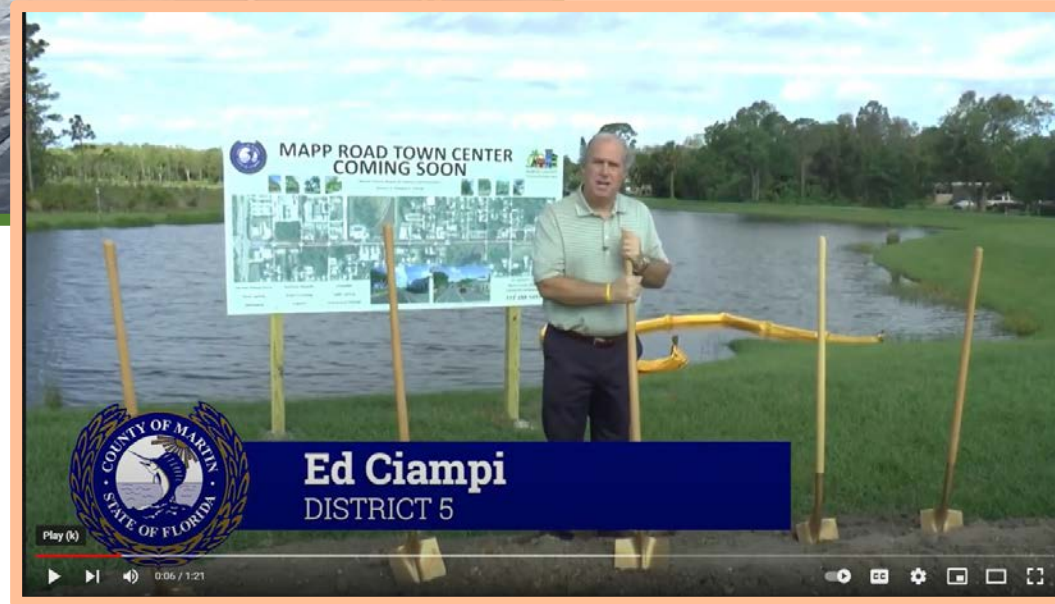
INNOVATION

→ *Virtual Groundbreaking; Complete Streets; Creation of a Town Center*

Making new spaces!



20-foot-wide sidewalk in front of the future Palm City Park and Patio



Virtual Groundbreaking



GOLDEN GATE HOBE SOUND JENSEN BEACH OLD PALM CITY PORT SALERNO RIO



COMMUNITY IMPACT → *Infill Development; New Business/Residential/Retail; Ribbon Cutting*



Façade and landscape refresh

New Businesses



Rocky's Sub Shop



Shark Shak Ice Cream



Ribbon Cutting Event



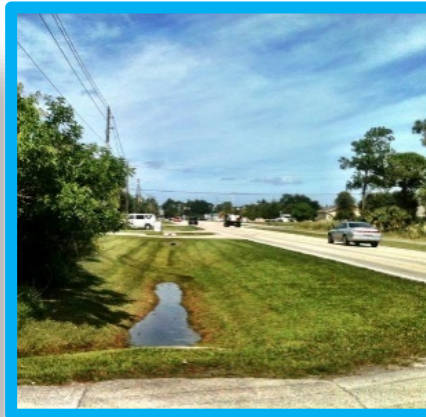
The Martin Apartments



GOLDEN GATE HOBE SOUND JENSEN BEACH OLD PALM CITY PORT SALERNO RIO



DESIGN → *Engineering; Creating New Spaces; Cultural Assets*



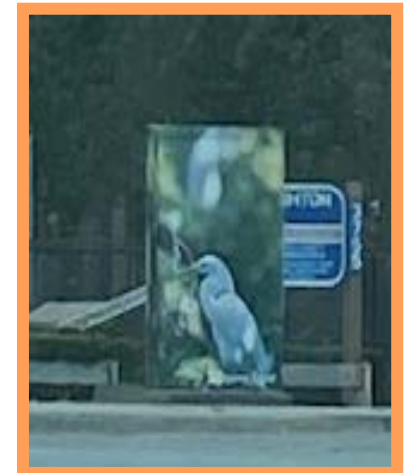
Drainage infrastructure redesigned



Residential parking lot before and after



Placemaking – Banners, Mural, Box Wrapping



GOLDEN GATE HOBE SOUND JENSEN BEACH OLD PALM CITY PORT SALERNO RIO



PROBLEM SOLVING → *Fire Station; Driveways; GeoPave; Pervious Parking*



No on street parking
(wet or dry!)



140 new, pervious, on street spaces



Part of the Community



Less driveways, enhanced pedestrian safety



GeoPaveX



GOLDEN GATE HOBE SOUND JENSEN BEACH OLD PALM CITY PORT SALERNO RIO



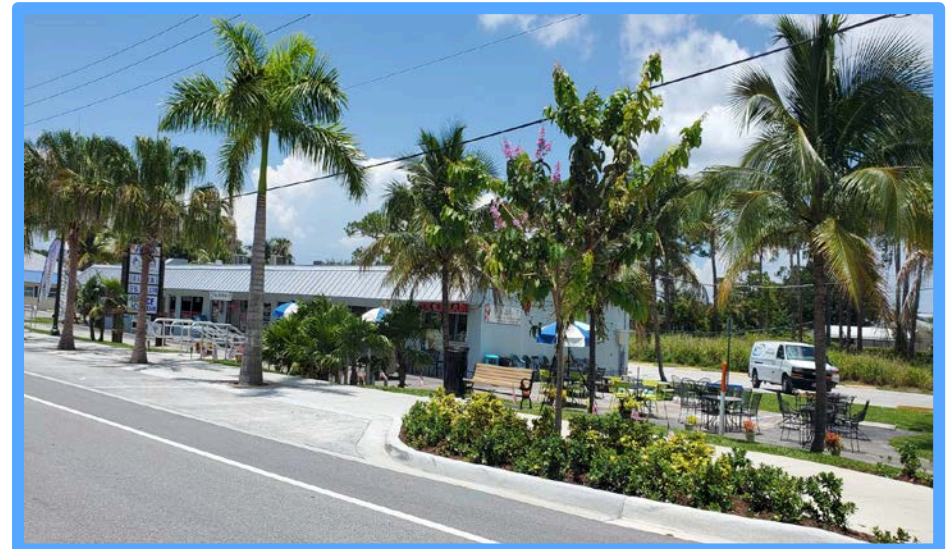
BEFORE and AFTER



Complete
Streets!



Treasure
Isle Plaza





Location of the future Palm City Place and Patio





Old Palm City Plaza



Palm City Animal Hospital





GOLDEN GATE HOBE SOUND JENSEN BEACH OLD PALM CITY PORT SALERNO RIO





MARTIN COUNTY
Community Redevelopment Agency



GOLDEN GATE HOBE SOUND JENSEN BEACH OLD PALM CITY PORT SALERNO RIO

Contact Us!

Office of Community Development
Building Community....Together

772-463-3253

or

CRA@MARTIN.FL.US

SCAN HERE
TO LEARN
MORE!

