



- ➊ - Proposed Stage
- ➋ - Event Lawn
- ➌ - Festival Street
- ➍ - Plaza
- ➎ - On Street Parking
- ➏ - Open Lawn
- ➐ - Relocated Stormwater Pond
- ➑ - Boardwalk Through Littoral Zone

- 9 - E.L. Puryear Building
- 10 - Veteran's Park

BIG IDEA

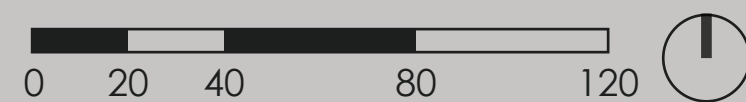
The Site Plan seeks to increase event capacity by opening the park and formalizing the corner as a great lawn. The location of the park at the corner of Broad Street and North Lake Avenue could be celebrated as a connection for the community from downtown Groveland. The existing pavilion and walks will be removed to establish a 'Great Lawn'. A new performance structure will be procured and located along the western boundary of the park, tucked into the existing canopy.

The 'Great Lawn' will be complimented with a festival street, which provides an approved public right-of-way location that can be closed to traffic on multiple occasions during the year for pedestrian-focused special events. Locating a festival street on North Lake Avenue adjacent to the park enhances the quality of the pedestrian environment, provides connections to the E.L. Puyer Building and park, and increases park programming opportunities all without conflicting with the desired traffic circulation.

The existing cross section of North Lake Avenue, north of Broad Street, provides for two way traffic and on-street parking. The cross section could be extended south of Broad Street to provide increased accessibility to the park and establish the infrastructure for a festival street. During events the festival street could be closed to traffic and transformed into a pedestrian only area extending the parks capacity. In addition the festival street would join several of the City's cultural and recreational assets together establishing a significantly larger community resource.

IMPROVEMENTS

- Remove the existing pavilion and walks to maximize lawn, increase park program, and enhance views into the park. Establish a central event lawn to meet the capacity of future large scale events.
- Procure a new performance structure that meets the needs of park event programs
- Provide an accessible route to the stage for both the event crew, performers, and audience. The accessible route can also double as a plaza for increased event capacity and park programs.
- Relocate stormwater adjacent to lake edge and develop a buffer of native littoral planting. Create two stormwater pond cells, allowing water to stage during high storm events and be treated prior to entering the lake.
- New Streetscape, to match the cross section of North Lake Avenue north of Broad street.
- Formalize an open lawn adjacent to the park edge.



S&ME

LAKE DAVID PARK

Site Plan

CONCEPT | GROVELAND, FLORIDA | AUGUST 28 2017



- PHASE 1
- Site Demo
 - Grading
 - New Stage
 - Event Lawns: Sod & Irrigation
 - Relocated Stormwater Pond
 - Plaza and sidewalks

- PHASE 2
- Boardwalk Through Littoral Zone
 - Littoral Planting
 - Furnishings: Bench
 - Park Landscape

- PHASE 3
- Festival Street
 - On Street Parking
 - Crosswalks
 - Street Landscape
 - Street Lights
 - Event Power

COST	
Site Work	\$ 49,000.00
Architecture, Hardscape, & Site Furnishings	\$556,000.00
Landscaping	\$ 109,120.00
Total	\$714,120.00

Mobilization & Contractor Mark-ups	\$71,412.00
Total	\$785,532.00

20% Contingency	\$157,106.40
Total	\$942,638.40

Design Fees and Permitting	\$942,638.40
Total	\$1,036,902.24

SCHEDULE	
Phase 1 (INCLUDES MARKUPS, CONTINGENCY AND DESIGN/PERMITTING FEES)	\$ 316,855.44

- Site Work: Site Demo, Grading, Stormwater Basin
- New Stage
- Walks and Plaza hardscape
- Sod and Irrgiation

Phase 2 (INCLUDES MARKUPS, CONTINGENCY AND DESIGN/PERMITTING FEES)	\$402,058.80
--	--------------

- Lakefront Boardwalk
- Littoral Planting
- Shade Trees
- Shade Tree Irrigation
- Tree Accent Uplighting/Downlighting
- Furnishings: Benches

Phase 3 (INCLUDES MARKUPS, CONTINGENCY AND DESIGN/PERMITTING FEES)	\$317,988.00
--	--------------

- Site Work: Demo site and roadway surface and curbing
- Festival Street: Pavers, Mountable Curb and Bands, Crosswalks, Planters.
- Landscape: Canopy and Palm Trees
- Street Lights
- Event Power

Total	\$1,036,902.24
-------	----------------