



May 29, 2019; Updated June 1, 2019

CALL FOR ARTISTS

NORTH MIAMI COMMUNITY REDEVELOPMENT AGENCY & BEFORE IT'S TOO LATE LIBERTY GARDENS PARK

The North Miami Community Redevelopment Agency (NMCRA) is working with Before It's Too Late to launch an augmented reality mural that raises environmental awareness at the renovated Liberty Gardens Park through the Art in Public Places Program. The mural canvas is on the east wall on site that spans 95' wide x 45' high. The project seeks design proposals from professional muralists and to commission the muralist whose design is accepted.

PROJECT: City of North Miami Liberty Gardens Park

BUDGET: \$13,000 plus materials

LOCATION: Liberty Gardens Park, 715 NE 125 Street, North Miami, FL 33161

DEADLINE: June 14, 2019, 5 PM EST

ELIGIBILITY

Open to all professional muralists. Professional muralists with demonstrated experience in creating large murals are strongly encouraged to apply for this project.

City of North Miami employees, NMCRA employees, Art Selection Committee members and their immediate family members are excluded from applying.

LOCATION DESCRIPTION

Located at 715 NE 125 Street, Liberty Gardens Park is a 2,700 square foot pathway and designated North Miami public park. Located at the site of a former shotgun-style building, this pocket park serves as a north/south connection between the municipal parking lot on NE 126 Street and the commercial shops on NE 125 Street.

After falling into disrepair over the last 15 years, a new capital project has been launched to renovate and beautify Liberty Gardens Park. The beautification project will include new vegetation and landscaping along with improved lighting, seating, a living wall, and magnificent

trellises. With its narrow dimensions and boundaries comprised of the east and west walls of two commercial buildings, Liberty Gardens Park will become a vibrant human-scale space where pedestrians experience the park's attributes.

The large wall on the east side of the park provides an opportunity for the creation of a public mural that will help communicate the emotions the park seeks to elicit from those who traverse the path while also telling an important message about native plants and environmental awareness.

OPPORTUNITY FOR PUBLIC MURAL

NMCRA seeks to commission a mural for the large east wall of 95' width x 45' height. The mural design should be cohesive with the vision for the renovated Liberty Gardens Park. We are seeking a muralist who will design and paint the mural and collaborate with Before It's Too Late's team who will activate the mural into an augmented reality (AR) experience accessible by mobile app.

The theme for this environmentally inspired mural is restoring native tree and plant habitats that nurture and allows birds, butterflies, bees, bats, and other wildlife to thrive. Restoring native tree and plant habitats is vital to preserving biodiversity. By creating native habitats, each patch becomes part of a collective effort to sustain and encourage a diverse living landscape. Native trees like the bald cypress and slash pine are also crucial in helping with flooding and sea level rise. See article by Audubon - [Why Native Plants Matter](#). The theme also complements the name of the pocket park, "Liberty Gardens Park", and its vision of providing an ecologically productive green retreat within the urban landscape. Many of the trees and plants in the park are native, and many will attract local wildlife. See exhibit for full list of trees and plants that will be in the park.

During this Call for Artists process, we are seeking muralists' portfolios and design proposals for the mural. Each proposal may include up to five total images and two distinct mural design concepts.

After the Art Selection Committee selects the winning proposal, the appointed muralist will work with the Creative Director of Before It's Too Late to finalize their mural design with inputs from the Art Selection Committee. The final mural design will highlight the artist's unique artistic vision along with the Art Selection Committee's vision for Liberty Gardens Park and its environmentally themed message. After the final design is approved, the muralist should execute the mural by late July to early August 2019.

Notes about the surrounding space: The bottom of the wall will be partially covered by short trees standing 8 - 12 feet tall and a single trellis with bright pink bougainvillea standing in the middle at 12 feet tall. A single, large date palm will stand at the north end of the mural wall. The mural wall will directly face a living green screen wall covered with flowering vines. There is a small pedestrian pathway with seating areas and flowering bushes between the two walls. This

pocket park will feature brightly flowering plants year round. The main plantings include: Copperpod trees, Jatropha trees, Beautyberry shrubs, Firebush shrubs, Purple Love Grass, Dwarf Fountain Grass, Sand Cordgrass, San Diego Red Bougainvillea and Rangoon Creeper Vine.

The architect's original vision was to do a triptych mural in order to break up the large wall, however we are open to other design themes. Keep in mind that there will be a lot of color, abundant flowering and plants inside this small pocket park, so consider how your mural design can help enhance or complement the experience.

ESTIMATED BUDGET

The muralist will be paid an artist fee of \$13,000 for designing and completing the mural and also provided a \$1,000 budget for paint, materials and all other costs associated with the implementation of the mural. If an out of town muralist is selected, they will also be reimbursed for a maximum of \$2,000 to cover travel expenses including economy class travel and stay. The artist fee will be paid for 50% at the start of the project and 50% after completion. The NMCRA will provide an electric cherry picker lift for the muralist. Artists shall purchase or maintain insurance as follows: workers compensation insurance and commercial general liability insurance coverage of no less than \$1,000,000 per occurrence and \$2,000,000 in the aggregate.

ESTIMATED SCHEDULE

Application Deadline	June 14, 2019 5 PM EST
Art Selection Committee meeting	June 21, 2019
Notification to Artists	June 24, 2019
Design Finalization Period	July 5, 2019
Painting Period Begins	July 6, 2019
Mural Completion	July 31, 2019 - Early August

Please note, this is a time sensitive project, and therefore, it is critical for artists to have the ability to adhere to prescribed schedules.

APPLICATION REQUIREMENTS

A complete application must include three documents:

1. Resume and short statement of up to 300 words about why you are inspired to apply for this project, as a pdf attachment clearly labeled: ARTIST NAME RESUME
2. Up to ten images representative of artist's mural work, as a pdf attachment clearly labeled: ARTIST NAME PORTFOLIO
3. Up to five images and a maximum of two distinct design concepts of the proposed mural, as a pdf attachment clearly labeled: ARTIST NAME PROPOSAL

Additional Instructions:

- All three attachments must be submitted via one single email to linda@vrbitl.org and sblatt@northmiamifl.gov.
- Email must include the following subject line: CALL FOR MURALIST NORTH MIAMI - ARTIST NAME (IN ALL CAPS)
- For documents 2 and 3, do not caption any of the pages and images attached with the artist's name. Short descriptions of less than 100 words are allowed per image in order to provide additional information. Artists names should not be included anywhere on the pages in order for the Selection Committee to make a blind evaluation of the artwork that is not influenced by the artist's identity.
- Teams of up to two muralists may submit a joint application. If you do this, please combine your documents for Resume and Completed Work by placing the first artist's submission followed by the second artist's submission. Separate the two submissions with a cover page labeled JOINT APPLICATION: NEXT ARTIST.

SELECTION PROCESS

An Art Selection Committee will review all proposals and make a selection. The primary criteria for selection will be previous artistic accomplishment as demonstrated in images of completed artwork, large mural experience, and design concepts for this site specific project.

ART SELECTION COMMITTEE

The committee is a panel composed of five professionals in the field of art, public art, environmental education and stakeholders including the City of North Miami, the project architect and landowner.

ABOUT NORTH MIAMI ART IN PUBLIC PLACES

The city of North Miami's Art in Public Places Program is coordinated in consultation with Miami-Dade County's Art in Public Places Program.

The program was established by Ordinance 1291 on January 12, 2010 to commission and purchase artworks by contemporary artists in all media for public spaces and facilities in North Miami.

ABOUT THE CITY OF NORTH MIAMI

North Miami, with a population approaching 60,000 residents, is home to one of the most ethnically diverse communities in the state of Florida. Encompassing approximately 9.5 square miles, it is ideally located midway between Miami and Fort Lauderdale.

North Miami is committed to the growth of its business community, while also focusing on issues such as education, the arts, leisure activities, and sustainability to provide a viable future for its residents and preserve the City's rich history.

ABOUT NORTH MIAMI COMMUNITY REDEVELOPMENT AGENCY

The North Miami Community Redevelopment Agency (NMCRA) is an independent government agency that was fully established in 2005 by the City of North Miami and Miami-Dade County, under Chapter 163 of the Florida Statutes. The NMCRA is charged with the responsibility of eliminating conditions of blight that exist within the City and helping to improve the quality of life by revitalizing the City's physical, economic, educational and social resources. The agency will achieve this by organizing programs related to economic development, marketing, public relations, security, physical improvements, special events, parking, and any other programs which further redevelopment. The designated Community Redevelopment Area comprises 3,250 acres, approximately 60% of the city.

ABOUT BEFORE IT'S TOO LATE

Before It's Too Late (BITL) is a nonprofit organization based in Miami, FL whose mission is to use art and technology to awaken and inspire people to build a more sustainable world together. BITL has launched programs in multimedia storytelling, virtual & augmented reality, public murals, simulation games, schools and community events. Through its community programs, BITL empowers local artists, students, and vulnerable communities to become agents of change on climate change and environmental protection. To learn more about their work, watch: [“The Art of Understanding Climate Change” by The New Yorker](#).

ADDITIONAL INFORMATION

For additional information, please email linda@vrbttl.org and sblatt@northmiamifl.gov.

Exhibits:



Liberty Gardens Park Improvements view facing North



West Elevation

West elevation and section



Section

Liberty Gardens Park

May 8th, 2018



West side one-story green screen wall at approximately 14' high blocks view to adjacent parking lot.



East Elevation

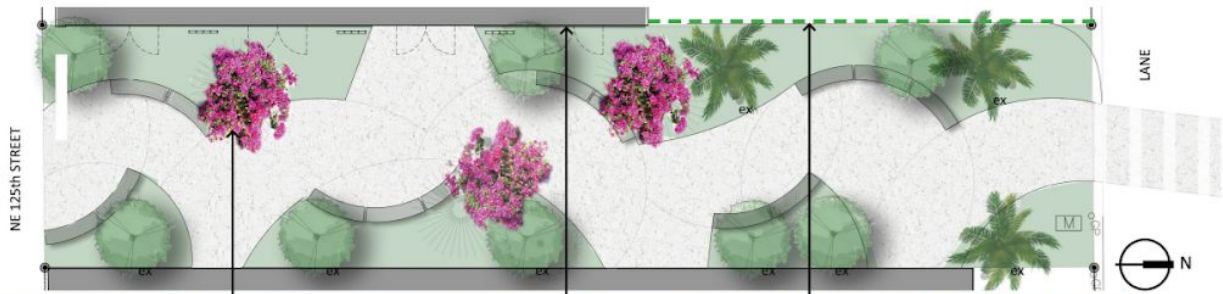
East elevation

Liberty Gardens Park

May 8th, 2018



East side four-story wall at 45' high and 95' wide provides mural canvas.



steel landscape trellis with
bougainvillea



green screen wall



green screen fence



Rangoon Creeper
Quisqualis indica
Florida Friendly

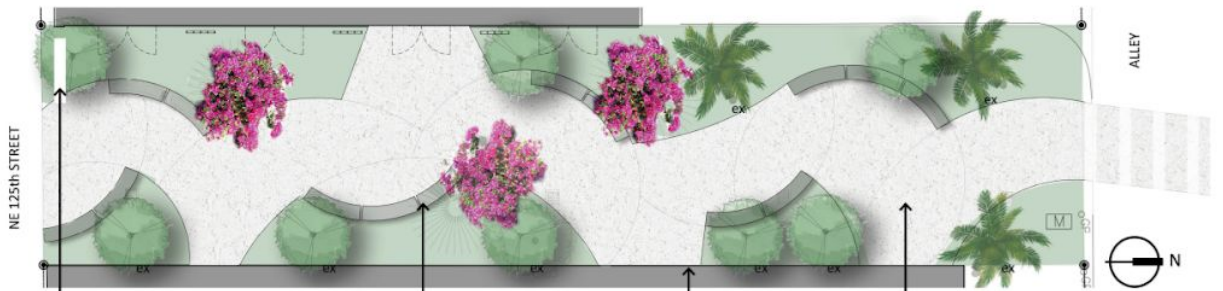
THE CORRADINO GROUP

Proposed trellis and green screens

Liberty Gardens Park

May 8th, 2018

MAK
work



cast concrete or metal letter
signage



Belson curved concrete bench
#TF5160 white



trash receptacle to
match City standard



painted wall mural



salt finished
white concrete

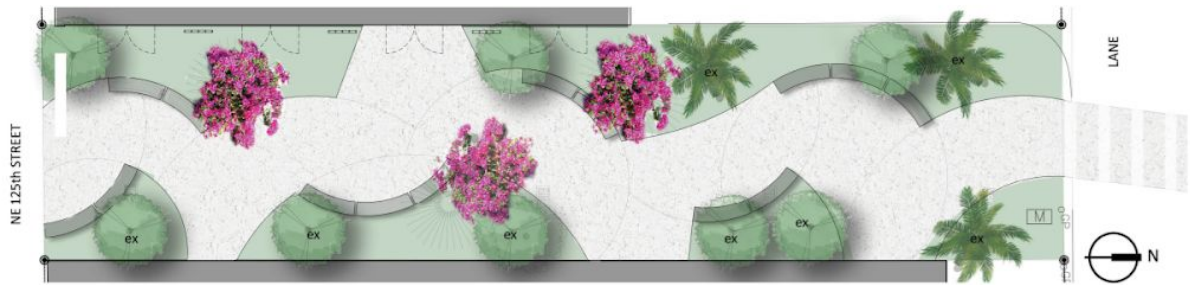
THE CORRADINO GROUP

Proposed signage and park features

Liberty Gardens Park

May 8th, 2018

MAK
work



small trees
(5) existing to
remain and
(3) new



Jatropha
Jatropha integerrima
Native



existing palms
to remain



Sugar Date Palm
Phoenix sylvestris
Florida Friendly



Royal Palm
Roysonia regia
Native

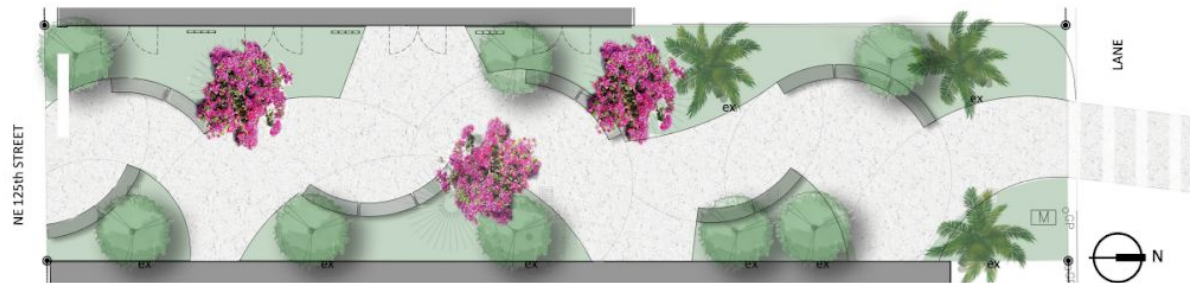
Proposed trees

Liberty Gardens Park

May 8th, 2018

THE CORRADINO GROUP

MAK
work



groundcover
& grasses



Lady of the Night
Brunfelsia Americana
Native



Firebush
Hamelia patens
Native



Wild Coffee
Psychotria nervosa
Native



Fakahatchee Grass
Tripsacum Dactyloides
Native



Purple Love Grass
Eragrostis Specabilis
Native



Creeping Jasmine
Trachelospermum asiaticum
Florida Friendly

Proposed groundcovers and grasses

Liberty Gardens Park

May 8th, 2018

THE CORRADINO GROUP

MAK
work



Existing parking lot across alley



Existing park entrance

Liberty Gardens Park

May 8th, 2018



Existing Conditions



Liberty Gardens Park

May 8th, 2018





Photo & Video of Wall











Video Link - <https://photos.app.goo.gl/Qc6GZYxj5mZtbhvv5>

Please note this park is currently undergoing renovation, however the big three story white wall will stay and become the mural canvas.

Plant List

		Native
	Copperpod canopy tree Peltophorum pterocarpum (commonly known as copperpod, yellow-flamboyant, yellow flametree) is native to tropical southeastern Asia and a popular ornamental tree grown around the world.	
	Jatropa small trees Jatropa Integerrima is an evergreen shrub or small tree with stunning flowers that will bring butterflies and hummingbirds to your garden.	

	<p>Beautyberry shrubs (<i>Callicarpa Americana</i>) Beautyberry is a deciduous shrub noted for its brightly colored, tightly clustered berries that remain on the bush into winter. Beautyberries grow 4 to 8 feet tall and wide. Attracts various pollinators. The seeds and berries are important foods for many species of birds.</p>	X
	<p>Firebush shrubs (<i>Hamelia Patens</i>) Hamelia patens is a large perennial shrub or small tree that is native to the American subtropics and tropics. Its range extends from Florida in the southern United States to as far south as Argentina. Common names include firebush, hummingbird bush, scarlet bush, and redhead. Excellent hummingbird and zebrawing attractant. Attracts sphinx moths and the Pluto sphinx uses it as a larval host. Birds and small mammals use the fruits.</p>	X
	<p>Purple Love Grass (<i>Eragrostis Spectabilis</i>) Purple Love Grass is a perennial, warm season grass that grows actively during the summer when soil temperatures are warm. It reaches heights of 1-2 feet even in the driest, poorest of soils. The seed heads (or florets) bloom mid-summer in shades of light to bright purple, giving an overall purple haze to the landscape. Birds and other wildlife consume seed. Larval host for zabulon skipper butterfly.</p>	X
	<p>Dwarf Fountain Grass (<i>Pennisetum alopecuroides</i> 'Hameln') 'Hameln' is a smaller variety of fountain grass with three distinctive seasons of stunning displays. Green, fine-textured grass blades up to 3 feet tall are tipped with soft, wheat-shaped seed heads. Foliage turns rust gold in autumn and pale blonde in winter, and is a favorite stopover for birds.</p>	
	<p>Sand Cordgrass (<i>Spartina Bakeri</i>) Spartina bakeri is a species of grass known by the common names sand cordgrass and bunch cordgrass. It is native to the southeastern United States, where it grows along the coast and in inland freshwater habitat in Florida. This species forms dense bunches up to 20 feet wide with stems up to 4 feet tall.</p>	X

	<p>San Diego Red Bougainvillea Bougainvillea is a genus of thorny ornamental vines, bushes, or trees. The inflorescence consists of large colourful sepallike bracts which surround three simple waxy flowers. It is native to South America from Brazil west to Peru and south to southern Argentina. Bougainvilleas are flowering machines. You can't beat them for an explosion of color.</p>	
	<p>Rangoon Creeper Vine (Quisqualis Indica) Also known as the Chinese honeysuckle or Rangoon creeper, this is a vine with red flower clusters. The unique flowers of Rangoon creeper emerge white, change to pink and then deep red, with a delightfully sweet fragrance. The flowers change in colour with age and it is thought that this is a strategy to gather more pollinators. The flower is initially white and opens at dusk. This attracts hawkmoths with long tongues for pollination. On the second day it turns pink and on the third it turns red attracting day-flying bees and birds. The flower also changes from a horizontal orientation to a drooping pose.</p>	
	<p>Date palm, (Phoenix dactylifera) Tree of the palm family (Arecaceae) cultivated for its sweet edible fruits. The date palm has been prized from remotest antiquity and may have originated in what is now Iraq. Date trees typically reach about 21–23 metres (69–75 ft) in height.</p>	

Resource: Florida Native Plant Society
<https://www.fnps.org/plants/>