

# PATRICIA DAVIS COMMUNITY GARDEN

2020 FRA Award Submittal

Pompano Beach Community  
Redevelopment Agency

Category – Management  
Programs & Creative Partnerships



# Partnership

- The Fruitful Field is a local 501(c) 3 non-profit organization who is a highly qualified and experienced garden operator.
- Manage the garden's operations and programming.
- Developed a long-term plan for the Community Garden sustainability and growth.
- Once the Community Garden had been completed and planting had been established, the Fruitful Field continues to maintain the garden to ensure its overall health to keep the garden viable for the long haul.
- Contact Information: Chris Reesor:  
[chris@thefruitfulfield.org](mailto:chris@thefruitfulfield.org) 954-849-2408

the fruitful field





# Location – 1089 NW 6<sup>th</sup> Ave

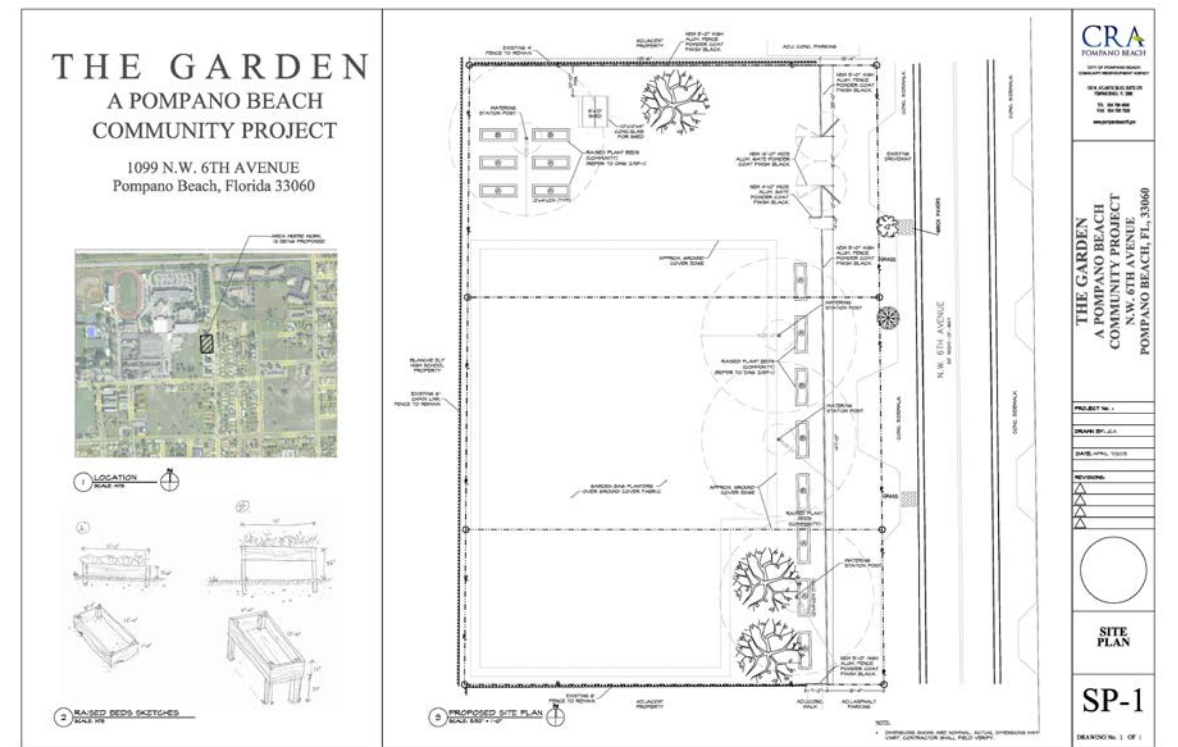
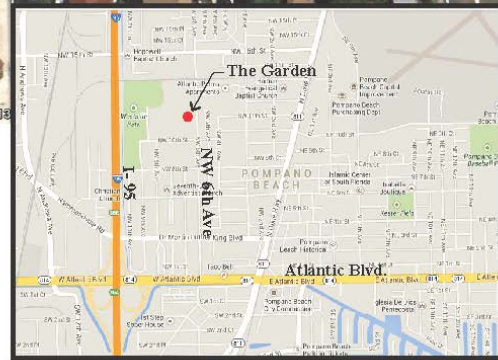
- Located in the heart of the NW CRA District
- Established to promote healthy living & culinary education in the NW community



The Garden is located approximately one mile from the I-95 exit onto Atlantic Blvd.

The Garden is on NW 6th Ave adjacent to Blanche Ely High School

Location Map B- The Garden



# Before Construction





# During Construction





# Today







## Grand Opening & Ribbon Cutting Ceremony



# Patricia Davis Community garden

The Patricia Davis Community Garden is a place where we model creative and sustainable use of land, provide dynamic hands-on learning opportunities for all ages, and build healthy relationships with the local community and environment. Together we will grow a healthy and prosperous future for Pompano Beach.



**David Miller, Asst Garden Manager**





# Community Plots





# Grow City Youth







# Special Events



## OPENING OF THE NEW SEASON & BUTTERFLY GARDEN

It's been a warm summer but we're excited to announce the launch of the Patricia Davis Community Garden 2018,19 grow season. Come out and experience the joy of gardening, learning and growing great vegetables with friends and family.

**1089 NORTHWEST 6TH AVENUE**

FOR MORE INFO: 954.849.2408

EMAIL: ChrisR@TheFruitfulField.org



**EARTH DAY**

1089 NW 6 Ave  
Pompano Beach

**SATURDAY  
APRIL 18th  
10AM-1PM**

Patricia Davis  
Community  
garden

the fruitful field

pompano  
beach.  
Florida's Warmest Welcome

POMPANO BEACH CRA



# Apprenticeship





# Community Engagement



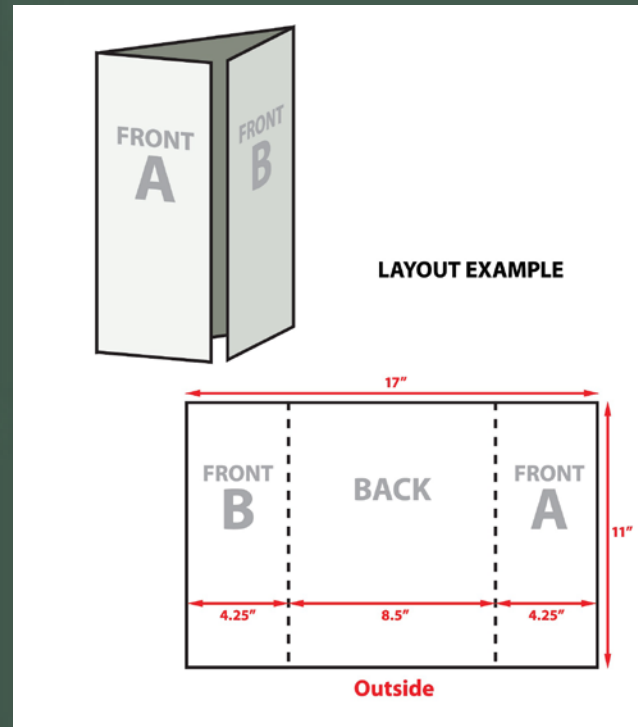


# Pompano Beach Green Market





# Collateral Pieces





# Patricia Davis Community garden

The Patricia Davis Community Garden is a place where we model creative and sustainable use of land, provide dynamic hands-on learning opportunities for all ages, and build healthy relationships with the local community and environment. Together we will grow a healthy and prosperous future for Pompano Beach.



For More Information, Please Contact Chris Reesor at The Fruitful Field: 954-849-2408 or [chris@thefruitfulfield.org](mailto:chris@thefruitfulfield.org)

# Patricia Davis Community garden



For More Information, Please Contact Chris Reesor at The Fruitful Field: 954.849.2408 or [chris@thefruitfulfield.org](mailto:chris@thefruitfulfield.org)