



Lake Worth CRA:

2018 FRA Award Submission

Transportation/ Transit Enhancements

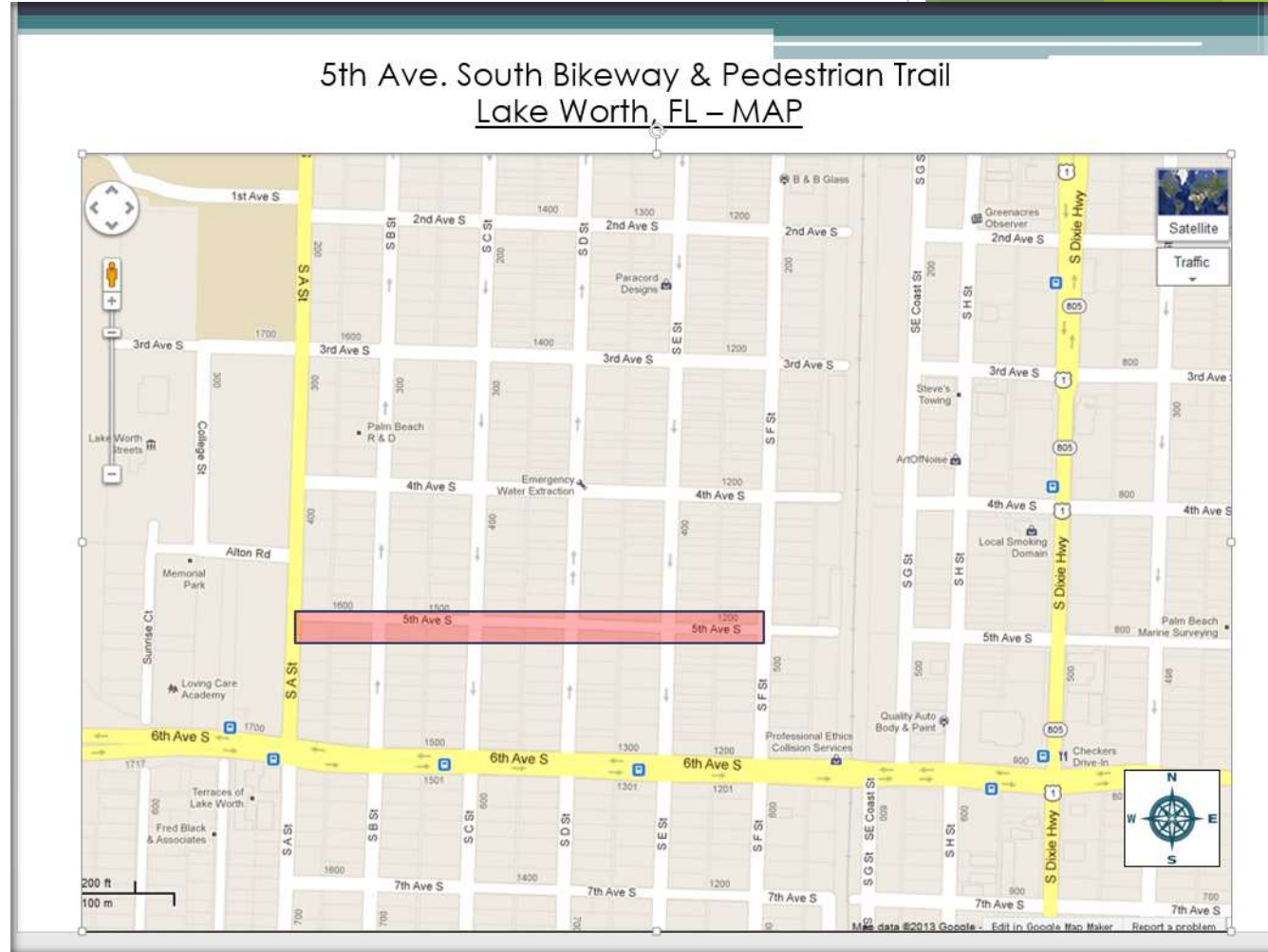
*The Royal Poinciana Trail At 5th Ave. South
Shared Use, Non-Motorized Pathway Project*



Lake Worth CRA

Location

- 5th Ave. South (ROW)
Lake Worth, FL
33460
- Located in a primarily residential, economically distressed area (CDBG Target Area)
- Formerly consisted of an unimproved right-of-way (dirt road)
- This Project encompasses 5 city blocks running east to west (1,500 linear feet)



The Purpose for this Project:

- Lake Worth is culturally diverse and transit dependent community.
- Lake Worth has a significant bicycling community that uses bikes for commuting, shopping and recreation.
- There exists a heavy use of bike usage in our historic western neighborhoods where most households do not own a vehicle.
- Numerous opportunities exist in our City to develop new pedestrian and bike friendly transit corridors.
- Need existed to improve safety for children walking to nearby schools. (*Safer Routes to School*)
- This Project takes an unutilized, unimproved right of way and transforms it into a multi-use shared pathway.
- Removal of slum & blighted conditions
- Project also helps to encourage neighboring property owners to cleanup and maintain their homes or businesses.

Project Description



- This 10' wide, winding concrete multi-use shared pathway replaced overgrown lots and former dirt trails strewn with trash, litter and debris.
- 1/3 of a mile in length
- The pathway connects the Rotary Club Park to Memorial Field and Lake Worth High School.
- This Project also resulted in the creation of a new linear park for the direct neighborhood.
- Open to non-motorized vehicles and foot traffic only.
- The idea for this Project was conceived by the CRA in 2013 and was finally completed in February 2018.
- Built on-time and under original budget.
- Project was made possible due to grant funding received from FDOT and the Transportation Alternative Program administered by the Palm Beach County Transportation Planning Agency.

Funding

Partner	Role	Dates of Service	Funding Amount	Notes
Lake Worth CRA	Project Manager/Grant Writer/ Oversaw Design	2013 - 2018	\$ 118,000 (CRA TIF)	Responsible for TPA Grant Application. Project design. Initial community outreach.
Kimley Horn	Project Designer/LAP Consultant	2014 - 2018	-	Design Team hired by the CRA
Palm Beach County TPA	Project Approving Agency	2013 – 2018	\$708,000 (TPA Grant)	Responsible for approving project allowing FDOT to fund project
FDOT	Funding Agency	2013 - 2018		Funding agency
City of Lake Worth	Lead LAP Applicant/Owner & Maintenance of Project	2013 - continuous	\$ 100,000+ (City General Funds)	Construction Engineering Inspections; On-going Maintenance; On-going Utilities



Project Partners

- Lake Worth CRA
- City of Lake Worth
- Florida Department of Transportation
- Kimley Horn & Associates

- School District of Palm Beach County
- Palm Beach Transportation Planning Agency (fka: Palm Beach County MPO)
- Rotary Club of Lake Worth



Community Impact

- This Project has helped clean up a blighted area of the City, provide new greenspace, and provide residents a safe option to navigate throughout their City.
- It has reduced the threat of injuries & deaths by removing pedestrians and bicyclists from busy nearby streets.
- The Project has increased neighborhood pride with many residents wishing for expansion and inclusion of playground or workout equipment along the trail.

- This Project will provide greater connectivity to the existing network of bike lanes in the City.
- This Project serves as a prototype for future linear parks and trails built within the City.
- This Project makes better use of the Rotary Park & Memorial Parks and provides an opportunity for additional amenities in the future.



Transportation/Transit Enhancement

- Project is located near numerous small businesses, places of employment and public transportation options.
- Project is located less than ½ mile from Lake Worth Tri-Rail Station (train).
- Project is located in the vicinity of 4 major Palm Tran routes (bus).
- Project included 4 new vehicular speed control humps at cross streets with solar powered illumination detectors (lights) and plenty of new signage for enhanced pedestrian safety.
- Project added dozens of decorative bollards to discourage motorized vehicles for accessing the trail.
- Project provided the opportunity to underground overhead power lines and add cobra-head lighting for pedestrian security.
- New bike racks, trash cans and benches installed throughout the length of the Project.

► This Project was fully supported and funded by the Palm Beach County Transportation Planning Agency's Bicycle-Greenways-Pedestrian Advisory Committee (BGPAC). Seven other projects throughout Palm Beach County also submitted an application to be reviewed and ranked by the Transportation Planning Agency's Governing Board which is made up of local officials. The Lake Worth Project was ranked highest amongst all.



Focus on the Environment: Landscaping



- Overwhelming percentage of the landscaping is native and drought tolerant.
- Solar powered irrigation system with rain sensors were installed throughout the Project.
- Over 160 new native trees were planted to beautify the area and provide shade.

Before



Before



After



After



Thank you!

www.lakeworthcra.org

