



City of Cocoa

Waterfront Master Plan Update 2018
FIND Emergency Reconstruction Grant Before and After Photos

Post Irma Drone Flight Cocoa Village Riverfront



Cocoa Waterfront

Lee Wenner Park and Cocoa Riverfront Park

➤ Location

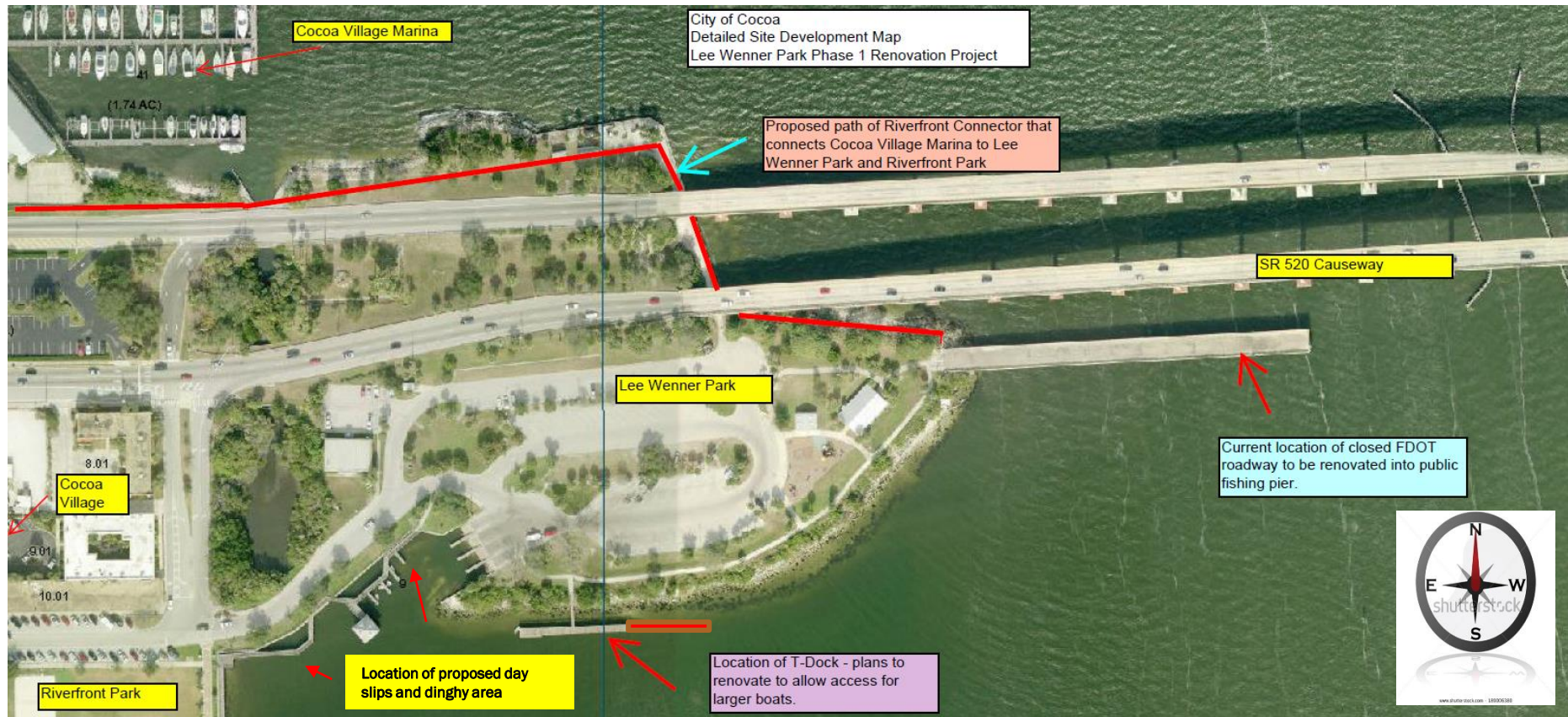
- ✓ Riveredge Drive and S.R. 520

➤ Pre IMRA Facilities

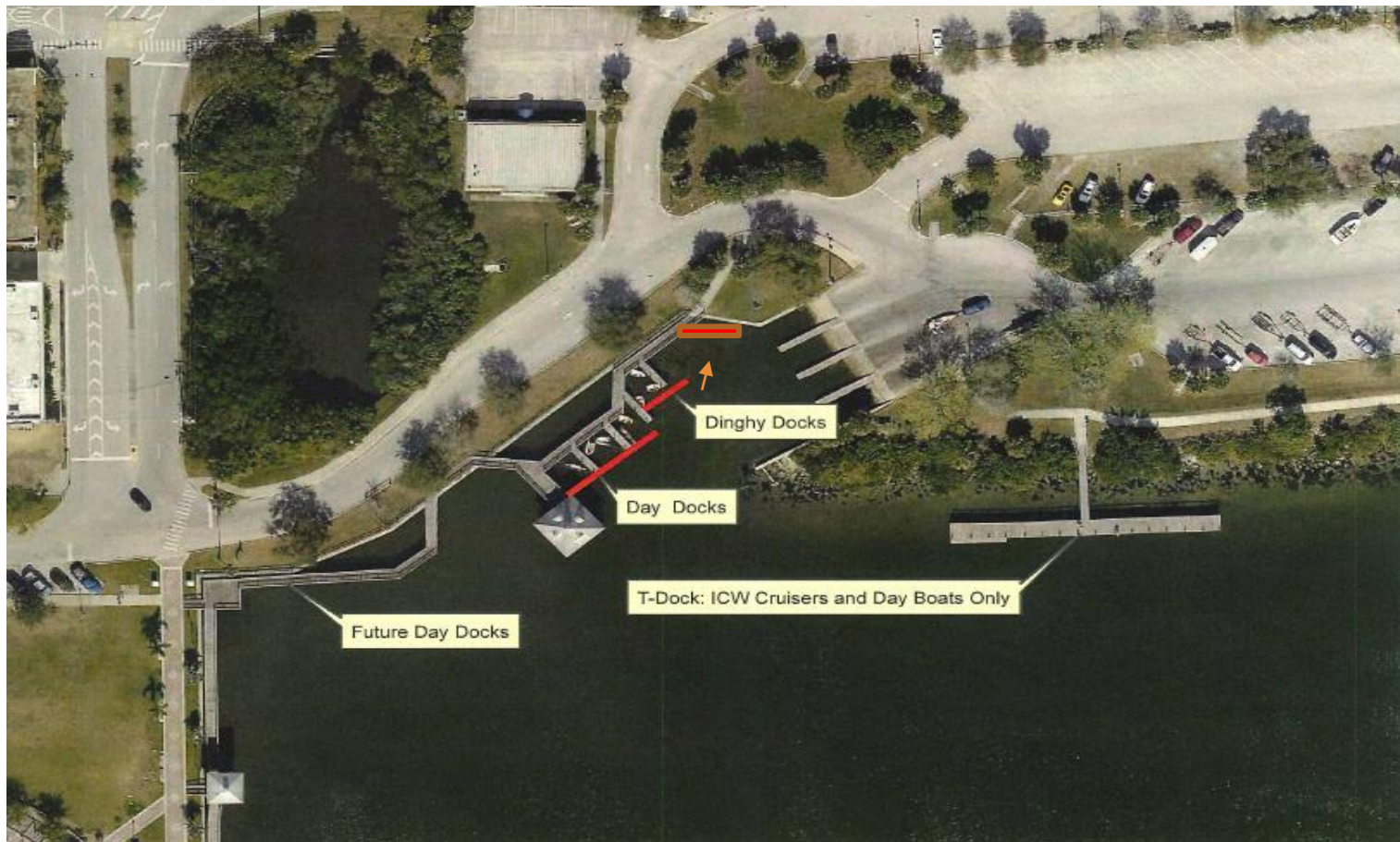
- ✓ Four Boat Ramps
- ✓ Access to Indian River Board Walk
- ✓ T-Dock, 8 Day Slips
- ✓ Picnic pavilion, playground and restrooms
- ✓ USCG Flotilla 46 Meeting Room
- ✓ Cocoa Village
- ✓ Cocoa Riverfront Park



Lee Wenner Park “Before IRMA”



Lee Wenner Park & Riverfront Park “Before IRMA”



Lee Wenner Park & Riverfront Park “Before IRMA”



Lee Wenner Park & Riverfront Park “Before IRMA”



Lee Wenner Park & Riverfront Park “Before IRMA”



Lee Wenner Park & Riverfront Park “Before IRMA”



Lee Wenner Park & Riverfront Park “Before IRMA”



Lee Wenner Park & Riverfront Park “Post IRMA”



Lee Wenner Park & Riverfront Park “Post IRMA”



Lee Wenner Park & Riverfront Park “Post IRMA”



Lee Wenner Park & Riverfront Park “Post IRMA”



FIND Project: Cocoa Riverfront Connector Underway Today



Lee Wenner Park- Boardwalk, T Dock and Day Slips

Where we are at Today

- Lee Wenner Park acquired from Brevard County (November 2017)
- Initial Assessment Complete
- Derelict, Damaged and Sunken Vessels Removed
- T-Dock, Boardwalk, Day Slips Debris Removal Complete
- Damaged Shoreline restoration is underway
- Lee Wenner Park Cleanup and Preparation
- Waterfront 3-5 Year Public Participation Plan Completion in March 2018
- Cocoa Riverfront Connector Construction Underway



Lee Wenner Park T Dock and Day Slips

Our proposal and approval of this grant will:

- ❑ Enable Reconstruction of 8 Day Slips/110 feet of access way
- ❑ Enable New Construction of an additional 6 boat slips under 2017 Grant
- ❑ Enable Reconstruction of 200 feet of T-Dock/access way
- ❑ Enable New Construction of 250 feet of T-Dock/access way under 2017 Grant
- ❑ Provide T-Dock area for approximately 11 ICW Cruisers
- ❑ Reconstruct 950' liner feet of Boardwalk/Esplanade
- ❑ Enable Reconstruction of approximately 1,440 sq. ft. of gazebo area
- ❑ Enable Reconstruction techniques with improved resiliency
- ❑ Restore Riverfront Utilization for more than 300,000 persons annually
- ❑ Enable approximately 25 Boat Slips/Docking Areas
- ❑ Enable approximately 5,110 boat visits (not including trailered boats)



City of Cocoa Irma Waterfront Opinion of Cost

Materials of Construction

Boardwalk, Slips, T- Dock, Gazebo	\$592,600
-----------------------------------	-----------

Installation

Boardwalk, Slips, T-Dock, Gazebos, Piles	\$639,400
------------------------------------------	-----------

Materials and Installation

Contractor Mobilization/Demobilization, Contractor OH, GC, FOB	\$221,900
----------------------------------------------------------------	-----------

Total Construction Cost

Engineering Design/Engineering Services	\$254,500
-----------------------------------------	-----------

Total Opinion Construction Cost

\$1,708,400

Funding Sources

FEMA (75%)	\$1,281,300
------------	-------------

FIND (25%)	\$427,100
------------	-----------

Total	\$1,708,400
-------	-------------

City of Cocoa	Resiliency/Improvements
---------------	-------------------------



Lee Wenner Park T Dock and Day Slips

Questions?

