



# Riverside Park Multimodal Corridor & Living Seawall

Palmetto CRA

Capital Projects Beautification

2017 Florida Redevelopment Association Awards



Before, Spring 2016

2016 re-imagined waterfront

New seawall

Living shoreline

Historic lights

Red brick pavers

Trees and landscaping

Benches

Garbage cans

Security cameras





Before, Spring 2016





During Construction, June 2016






Completed, Winter 2017





A photograph of a waterfront promenade. In the foreground, a wide, light-colored paved walkway runs along the water. A small, dark bird is standing on the pavement. To the right of the walkway, there is a grassy area with a large palm tree in the immediate foreground. Further back, there are more palm trees, a wooden bench, and a trash can. The water is a deep blue, and in the distance, a city skyline is visible across the water. A white sailboat is also visible on the water. The sky is clear and blue. The text "Before, 2015" is overlaid in the bottom left corner.

Before, 2015

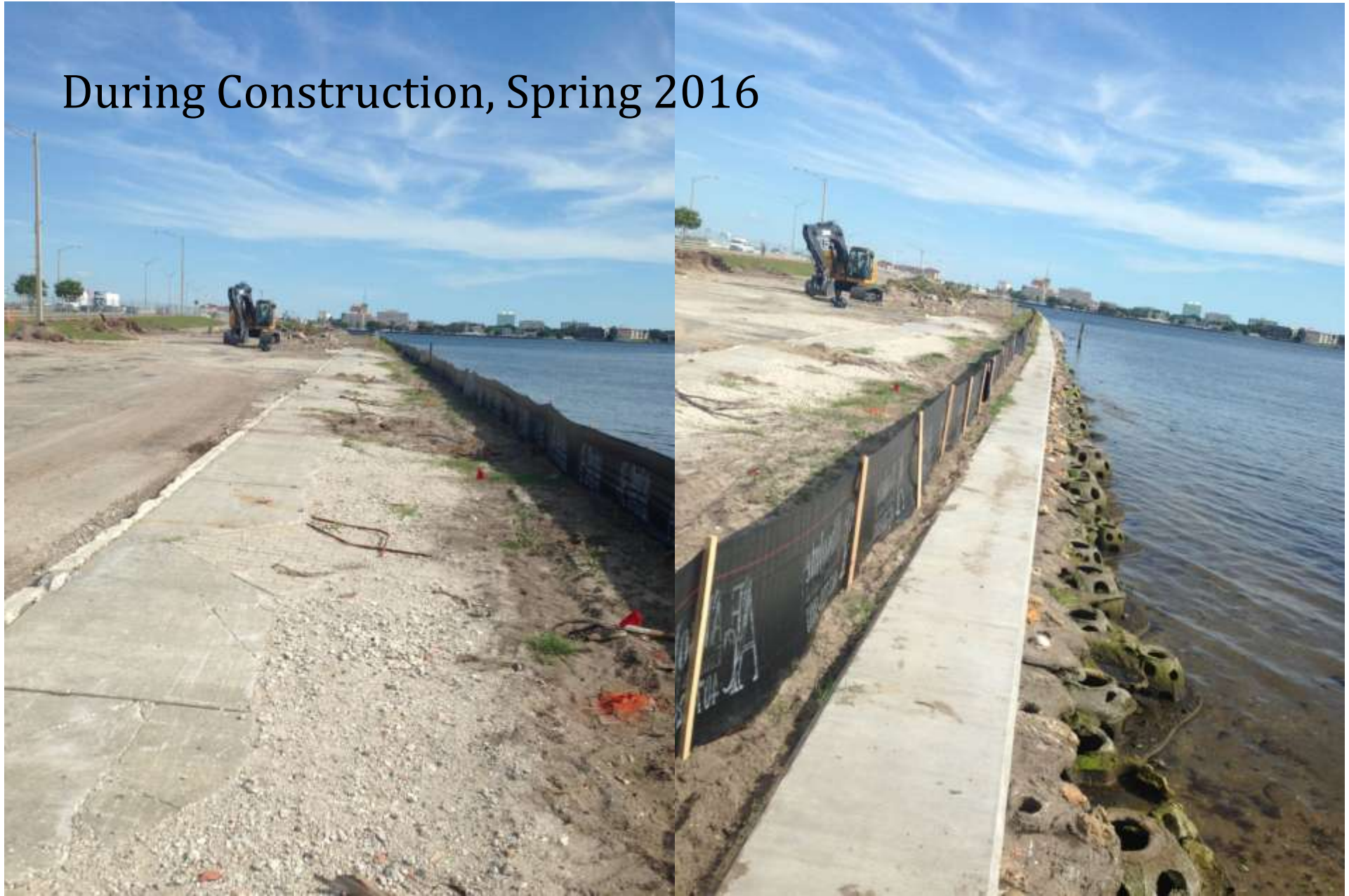




Before, 2015



During Construction, Spring 2016





Completed, Winter 2017























Reef Balls before assembly, at Reef Innovations facilities in Sarasota.  
Photo by Carl Mario Nudi, 2016.



Mayor Shirley Groover Bryant during construction of the multimodal trail. Photo by Carl Mario Nudi, 2016.