



**FLORIDA  
REDEVELOPMENT  
ASSOCIATION**

# **2012 AWARDS**

**HILTON DAYTONA BEACH OCEANFRONT**

**OCTOBER 26, 2012**

## Capitol Projects/Beautification



Washington Street Park  
City of Tampa, CRA/Stantec

More info: [lea.deltosto@stantec.com](mailto:lea.deltosto@stantec.com) • (813) 223-0009

## Creative Organizational Development and Funding



**Delta Kappa Omega/Providence Community Service Center**  
**City of Tallahassee, CRA**

More info: [sherri.baker@talgov.com](mailto:sherri.baker@talgov.com) • (850) 891-6452

## Cultural Enhancement




**East Gateway Hispanic Festival**  
**Clearwater Community Redevelopment Agency**


.....  
More info: [Geraldine.lopez@myclearwater.com](mailto:Geraldine.lopez@myclearwater.com) • (727) 562-4075

## Management Programs and Creative Partnerships



  
MINORITY BUSINESS DEVELOPMENT AGENCY  
**BUSINESS CENTER**  
U.S. DEPARTMENT OF COMMERCE

In collaboration with:

  
CRA  
REVITALIZE  
Fort Lauderdale

**FREE  
BUSINESS  
SEMINAR**

Wednesday, April 18, 2012  
12:00 p.m. – 2:00 p.m.  
City of Fort Lauderdale CRA  
914 NW 6<sup>th</sup> Street, Suite 200, Ft. Lauderdale, FL33311

**Using Your Business Plan to Raise Capital**  
*Presented by*

- Gibraltar Private Bank & Trust
- MBDA Business Center

**PROGRAM HIGHLIGHTS**

- The 5 C's of Lending
- Completing a Loan Application
- Alternative Business Financial Resources

**COMPLIMENTARY REGISTRATION**  
RSVP: 786.316.0888 \* EMAIL: [maria@mbdabusinesscenterfl.org](mailto:maria@mbdabusinesscenterfl.org)

The MBDA Business Center is funded by the U.S. Dept. of Commerce – MBDA, and Operated in Florida by M. Gill & Associates, Inc. - [www.mbdabusinesscenterfl.org](http://www.mbdabusinesscenterfl.org)

City of Fort Lauderdale Business Plan Project  
City of Fort Lauderdale, CRA

More info: [abattle@fortlauderdale.gov](mailto:abattle@fortlauderdale.gov) • (954) 828-4514

# Marketing and Communications

**LCRA Now**  
LCRA Now: May 2011

**In This Issue**

- Area Vacancy Rates
- Two-Block SF Office Leases Signed
- Development Corner: How to Determine Building Value

**Stay Connected**

Find us on Facebook

Follow us on Twitter

**LakelandCRA**

**Vacancy Rates**

According to the Maddox Report, office vacancy rates at the end of 2010 in the Tampa Bay area were as follows:

Sarasota	18.6%
Manatee	22.2%
Hillsborough	22.9%
Tampa Bay	23.7%
Polk	24.3%
Pinellas	27.9%

**1st Quarter 2011 Leasing Activity**

Two 10,000 SF office leases signed in the 1st Quarter have made a sizeable difference in the amount of available office space in Downtown Lakeland. Banker Commercial Saunders Raitson Dantzler leased the entire third floor of the BB&T building at 114 Tennessee Ave. Gary Raitson was the broker for the deal.

The second 10,000 SF deal recently inked is the USF Polytechnic for the third floor at 439 S. Florida Ave. The lease was handled by broker Jerry Herring of Herring and Company, who subsequently announced a second lease to USF Polytechnic for the only remaining space in the building, 3,859 SF on the first floor. The new lease will be called One Poly Place and will house employees of several different departments.

Leases of this size are exceptional and to have two signed in a month period is an indication of a change in the trend of leasing in Lakeland.

**Other office leases signed in the 1st Quarter include:**

- 1,800 SF to Darby Law
- 1,000 SF to Faithful +
- 100 SF to Mike Tr
- 256 SF to Jack Stro

**Back to School DixieLand Deals**

Information provided by owners and brokers of multi-tenant office space in Downtown Lakeland is current as of 10/20/10.

UNITED COMMERCIAL REAL ESTATE

**CITY OF Lakeland FLORIDA**

Living In | Doing Business | City Government | Services

SEARCH

GEORGIA DEVELOPMENT | DIVERSIFICATION | INCENTIVES | REPORTS | PUBLICATIONS | LOOKUP ADDRESS

**Lakeland CRA**

**Quick Links**

- LCRA Advisory Board
- Enterprise Zone
- Meeting Schedule
- Map
- Featured Projects

**Contact Us**

Lakeland Community Redevelopment Agency  
 114 Tennessee Ave.  
 Lakeland, FL 33801  
 (863) 834-8432  
[www.lakelandcra.com](http://www.lakelandcra.com)

Enterprise Zone  
 (813) 834-8432  
[www.lakelandcra.com](http://www.lakelandcra.com)

**City Connected**

**Lakeland is "Open for Business"**

The City of Lakeland is committed to taking an active role in supporting and growing our Business and Development community. We believe that it is necessary to foster and facilitate the creation of a self-sustaining local environment to grow, attract and retain a creative, talented and educated workforce. We aim to balance private sector needs with neighborhood and quality of life issues to encourage economic opportunities for all Lakeland residents.

The City of Lakeland offers many economic incentives for business and development interests through our [Enterprise Zone](#) and the [Lakeland Community Redevelopment Agency](#), as well as through our partnerships with the [Lakeland Economic Development Council](#), the [Florida Small Business Business Development Assoc.](#), the [Central Florida Development Council \(CFDC\)](#) and the [Lakeland Downtown Development Authority](#).

Our City staff is organized and willing to assist you in navigating the process of getting your business on project up and running.

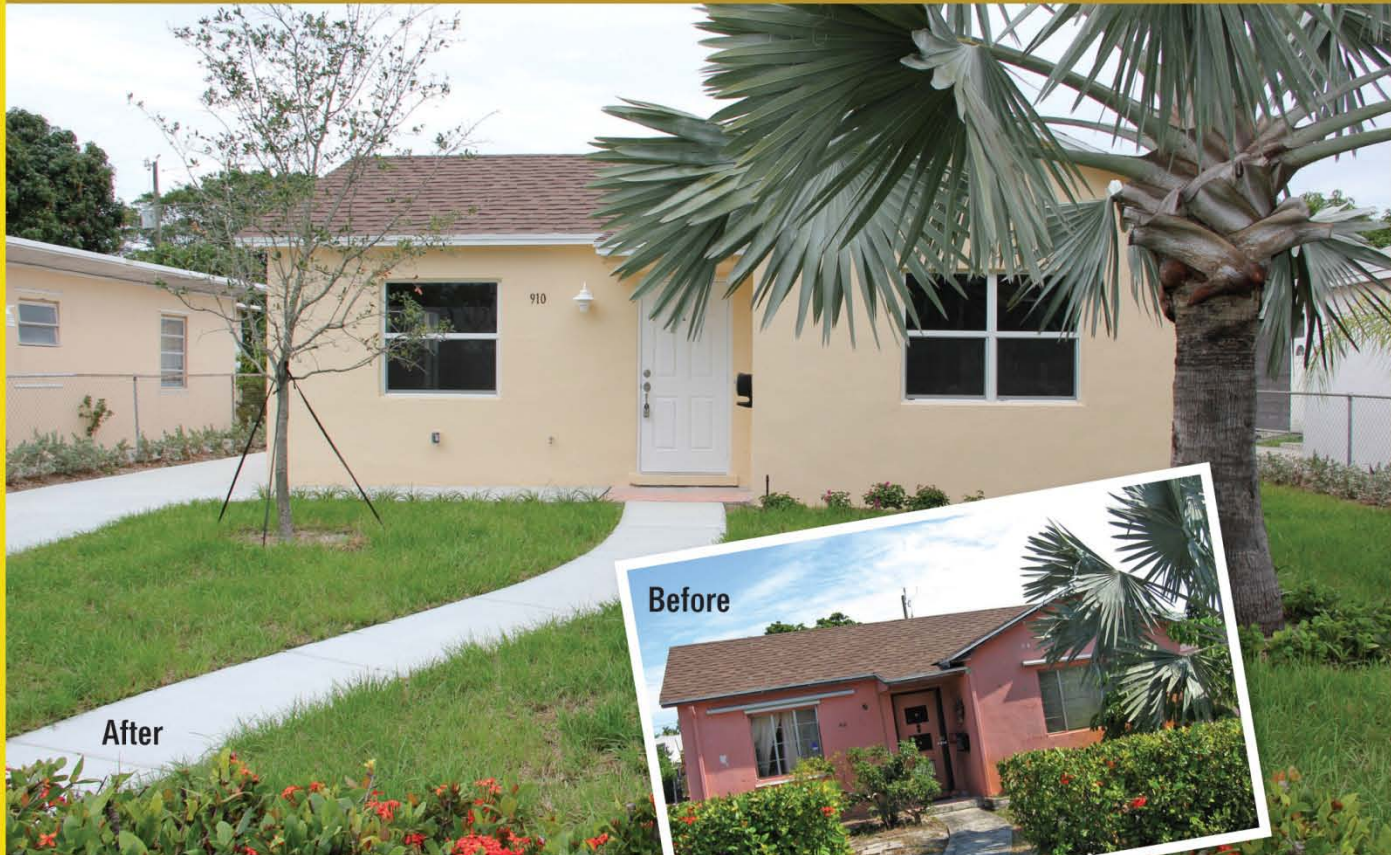
The City of Lakeland is open for business and we look forward to working with you!

Enterprise Zone | LakelandCRA

## Reinventing Marketing Campaigns: Cheap and Good City of Lakeland, CRA

More info: [tamara.sakagawa@lakelandgov.net](mailto:tamara.sakagawa@lakelandgov.net) • (863) 834-8432

## Outstanding Affordable Housing



After



Before

Lake Worth NSP-2 Consortium  
City of Lake Worth, CRA

.....  
More info: [etheodossakos@lakeworth.org](mailto:etheodossakos@lakeworth.org) • (561) 493-2550

## Outstanding Rehabilitation, Renovation or Reuse Project

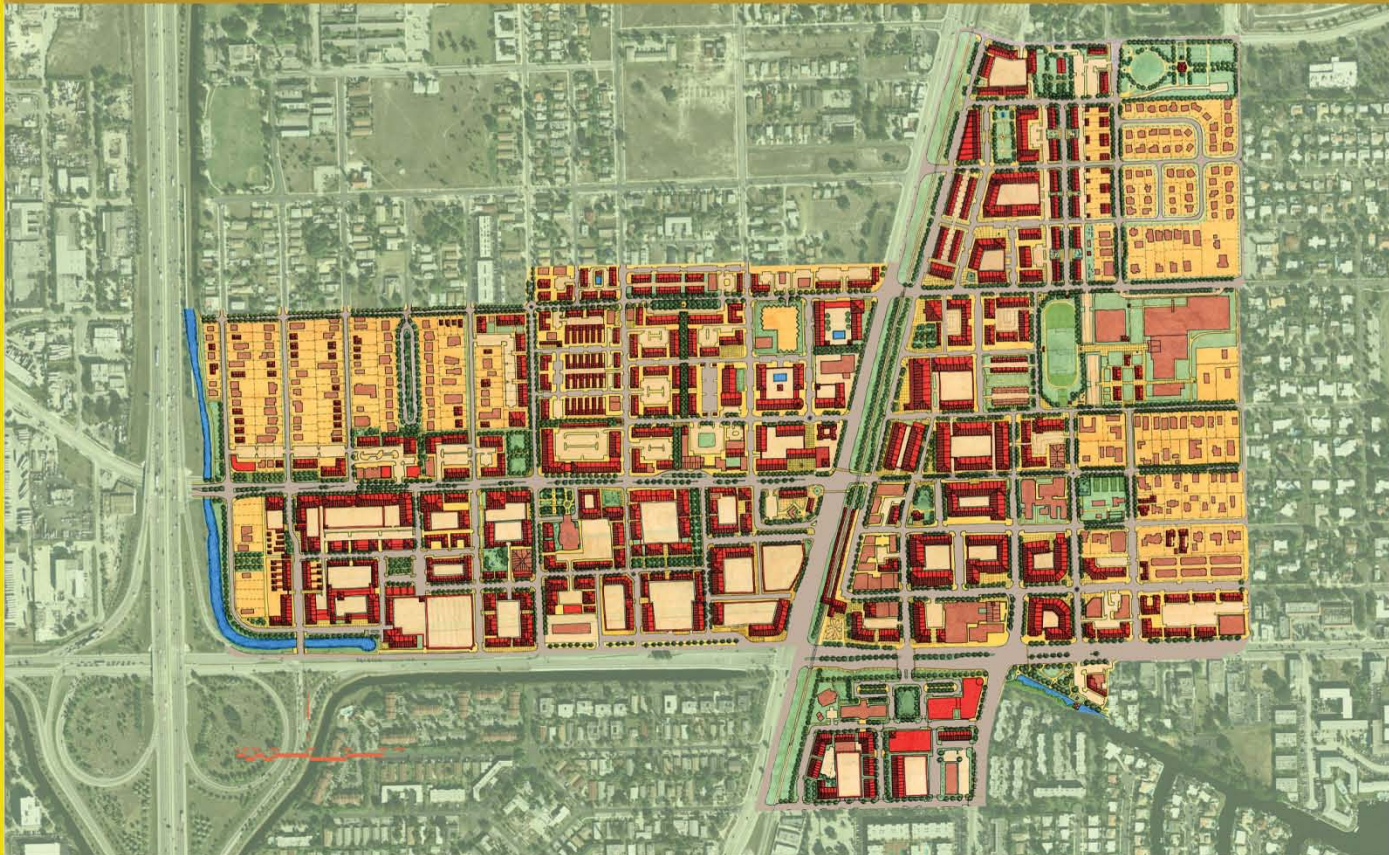


**Sweetbay Supermarket Project**  
**City of Cape Coral, CRA**

More info: [jjacobsen@capecoral.net](mailto:jjacobsen@capecoral.net) • (239) 549-5615



## Planning Studies

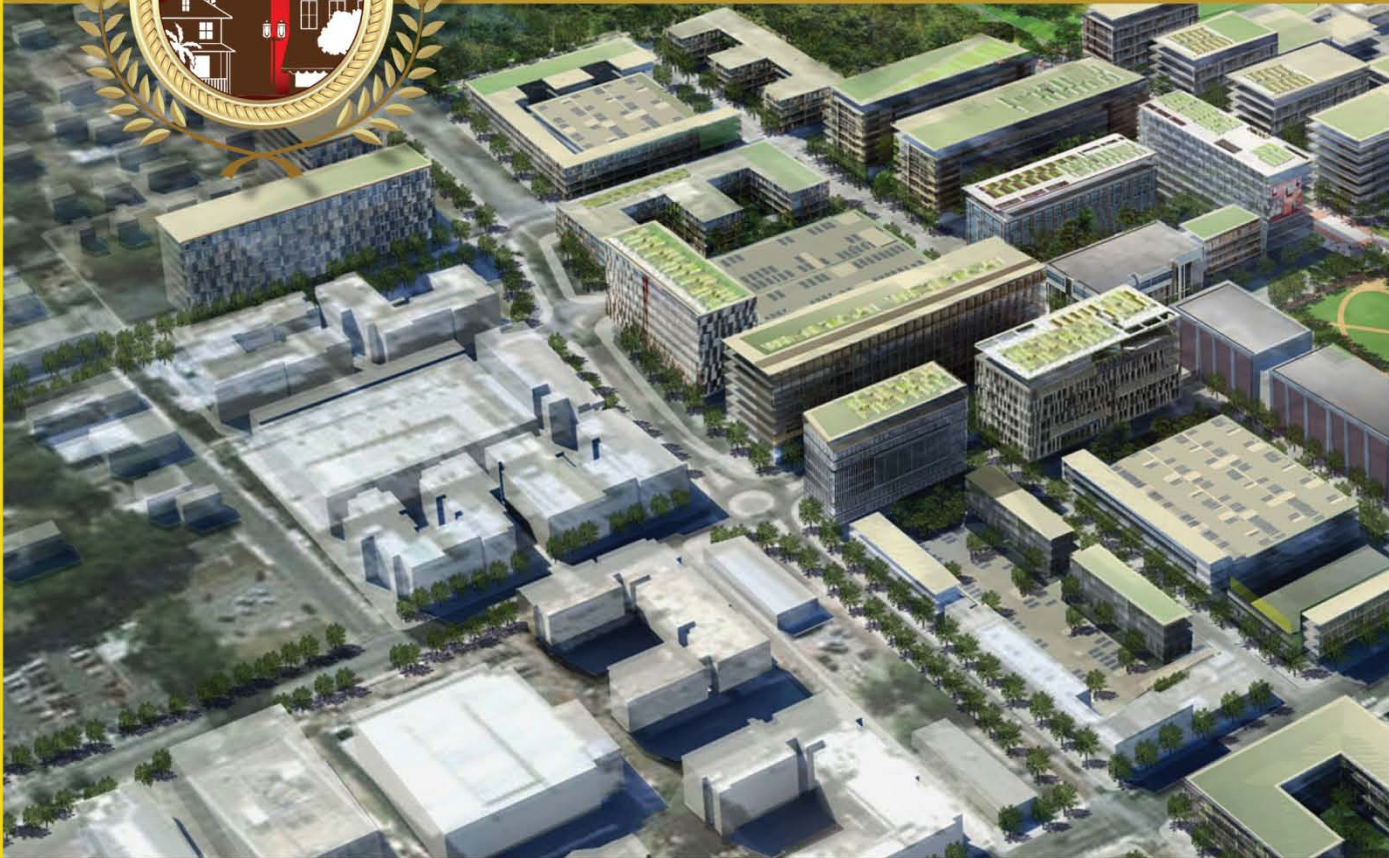


**Downtown Pompano Transit Oriented Corridor**  
**Pompano Beach Community Redevelopment Agency**

.....  
More info: [Natasha.alfonso@copbfl.com](mailto:Natasha.alfonso@copbfl.com) • (954) 786-7836



# President's Award Winner: Out of the Box



**Innovation Square**  
**Gainesville Community Redevelopment Agency**

.....  
More info: [fisherhk@gainesvillecra.com](mailto:fisherhk@gainesvillecra.com) • (352) 334-2132

# Congratulations to the 2012 FRA Award Winners!

