

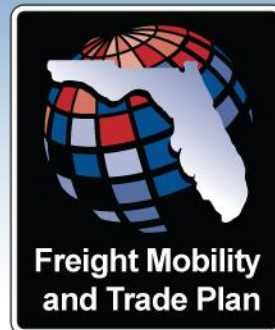
# FLORIDA

## Freight Mobility & Trade Plan



FLORIDA DEPARTMENT OF TRANSPORTATION

2012 Florida Redevelopment Association  
Annual Conference | October 24-26, 2012



# Presentation Outline

## Freight Mobility & Trade Plan

- Background
- Status of the plan

## Passenger Rail

- Status of current initiatives

# Governor's Focus

A key initiative of Florida Governor Rick Scott's 2012 Job Creation and Economic Growth Agenda is to



*“reprioritize state transportation projects to focus on those that would, over the short and long term, help create the greatest number of jobs”*

# Florida Department of Transportation

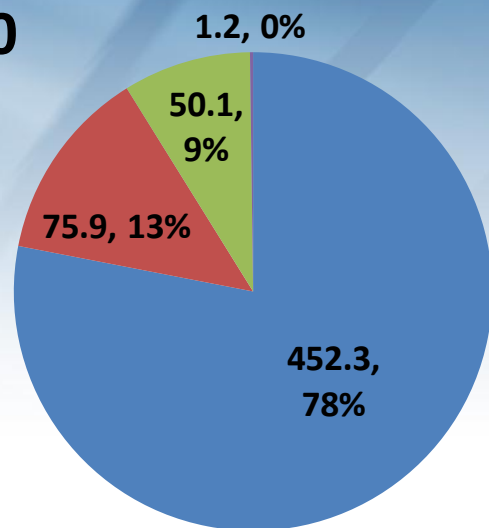
In response, Florida DOT Secretary Ananth Prasad created the Office of Freight, Logistics & Passenger Operations (FLP)



*“This office will play a key role in the advancing Governor Scott’s initiatives to transform Florida’s economy by becoming a global hub for trade, logistics, and export-oriented manufacturing.”*

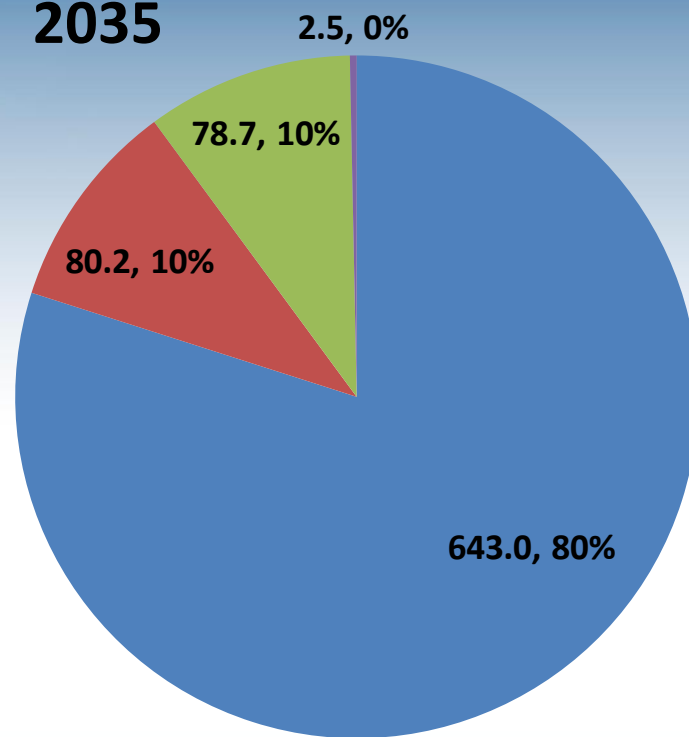
# Freight Expected to Increase

2010



■ Truck ■ Rail ■ International Water ■ Air

2035



■ Truck ■ Rail ■ International Water ■ Air

Florida Freight (in millions of tons)

	<u>2010</u>	<u>2035</u>	<u>AGR</u>
Truck	452.3	643.0	1.4%
Rail	75.9	80.2	0.2%
Water	50.1	78.7	1.8%
Air	1.2	2.5	3.0%

Note: Water excluded domestic movements.

Annual Growth Rate (AGR)



# Freight Mobility & Trade Plan



Tell the  
Freight  
Story



Develop  
the Plan



“Sell”  
Freight

3 Pillars

## Response to Florida House Bill 599

Approved on April 27, 2012 by signature of Governor Rick Scott, Florida House Bill 599 requires the Florida Department of Transportation to develop the Freight Mobility and Trade Plan. The goals for the creation of the plan are:

- 1. Increasing the flow of domestic and international trade through the state's seaports and airports ...** recapture cargo currently shipped through seaports and airports located outside the state.
- 2. Increasing the development of intermodal logistic centers in the state ...** capitalize on the empty backhaul trucking and rail market in the state.
- 3. Increasing the development of manufacturing industries in the state ...** transportation facilities that will promote the successful development and expansion of manufacturing facilities.
- 4. Increasing the implementation of compressed natural gas (CNG), liquefied natural gas (LNG), and propane energy policies ...** that reduce transportation costs for businesses and residents located in the state.

# Tell the Freight Story

## Communicate into simple to understand terms

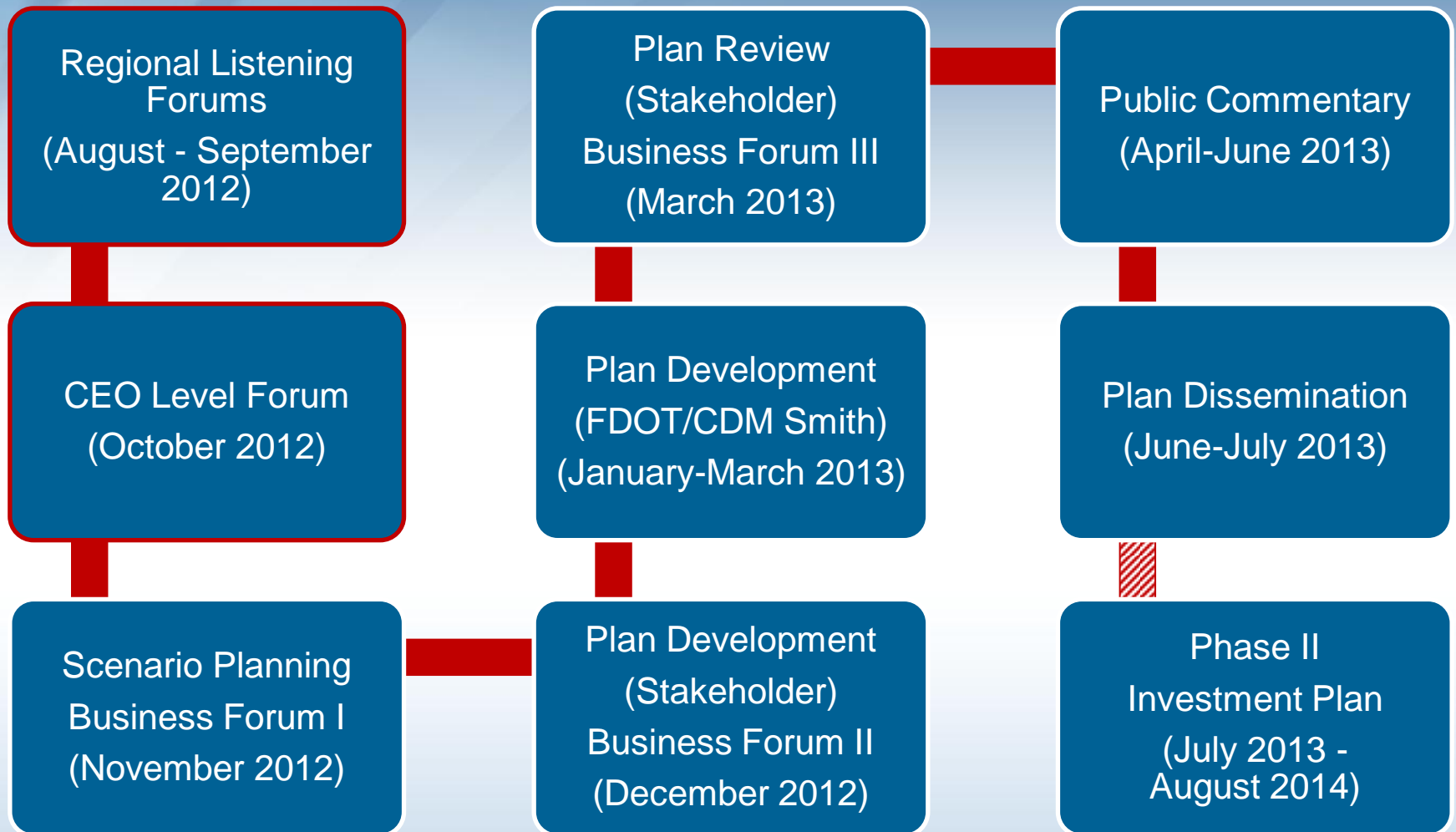
- No mixed signals - competing interests
- Harvard & GED

## Paint a picture of Freight

- To our daily lives
- Economic Development
- Jobs & health of our Economy
- A transitioning DOT



# The Plan's Path





# Regional Listening Forums

FDOT scheduled for six locations around the state, these sessions gathered observations and comments on the current and future condition of the freight transportation system from all interested participants.

## Extensive effort was made to hear from Private Industry on:

- Deficiencies of the system
- Solutions to remedy those conditions
- Future needs envisioned to support growth



## The six Regional Listening Forum sessions were held in:

Miami  
August 8, 2012

Jacksonville  
August 16, 2012

Ft. Myers  
August 29, 2012

Orlando  
August 9, 2012

Panama City  
August 17, 2012

Tampa  
September 11, 2012



## Make your voice heard!

Join discussions about Florida's ability to meet the needs of our businesses in transporting goods to, from and within the State, U.S., and across the globe.

The Office of Freight, Logistics, and Passenger Operations (FLP) for the Florida Department of Transportation (FDOT) will be hosting Regional Listening Sessions as the initial step in crafting Florida's Freight Mobility and Trade Plan.

Four sessions will be held across the state during August 2012 to hear your thoughts on:

- What are the issues, opportunities, and potential solutions affecting today's freight community in Florida?
- How can FDOT assist you in helping to expand Florida's economy and create jobs?
- What future strategies should be advanced by FDOT to better position Florida as a global freight hub?
- In looking to the future, how should FDOT structure its Freight Mobility and Trade Plan to meet the needs of the business community?

Sessions are planned from 9:00AM to Noon on each of the following dates:

MIAMI Aug. 8, 2012	Greater Miami Chamber of Commerce Ray Goode Ryder Conference Center Ballroom Level 1601 Biscayne Blvd, Miami 33132
ORLANDO Aug. 9, 2012	Turnpike Headquarters Building 5315 Rooms 1093 & 1094 (Auditoriums A & B) Florida Turnpike Mile Post 263, Ocoee 34761
JACKSONVILLE Aug. 16, 2012	JAXPORT Cruise Terminal 9810 August Dr, Jacksonville 32226
PANAMA CITY Aug. 17, 2012	Bay County Library Community Room 898 W 11th St, Panama City 32401
FT MYERS Aug. 29, 2012	Southwest Florida International Airport Airport Training & Conference Center 15924 Air Cargo Ln, Ft Myers 33913
TAMPA Sept. 11, 2012	Tampa Port Authority Board Room 1101 Channelside Dr, Tampa 33602

Registration is free, but SPACE IS LIMITED. Register at [https://www.surveymonkey.com/s/Regional\\_Listening\\_Session](https://www.surveymonkey.com/s/Regional_Listening_Session) or email [holly.munroe@dot.state.fl.us](mailto:holly.munroe@dot.state.fl.us) with questions.

## 2.2 Miami, Florida

### 2.2.1 Overview

Conducted on August 8<sup>th</sup>, 2012, the Miami Regional Listening Session is held from 9:00AM to 12:00PM. The Greater Miami Chamber of Commerce provides an auditorium located within the Ray Goode Ryder Conference Center, 1601 Biscayne Blvd, Miami, Florida.

### 2.2.2 Presenters

Additional presenters included Beth Kigel, Commissioner for the Florida Transportation Council (FTC), and Gus Pego, FDOT District Secretary. Port of Miami Director, Bill Johnson, presented as an endorsement speaker during the conduct of the facilitated discussion.

### 2.2.3 Attendees

The audience totaled 80.

The consulting support team includes:

- CDM Smith: PM, Task Lead, Lead Support, three support (local office)
- FCRG: Facilitator, two support facilitators
- Ron Sachs Communications: Sr. Technical Lead, Jr. Technical Lead, Production Crew
- Nancy Leskauf and Associates: Task Lead

### 2.2.4 Themes

Themes described during this session:

Positive conditions	Current conditions	Negative Conditions
Government agency relationships and efforts are resulting in improvements in permitting, vehicle registration, law enforcement coordination		Federal agency freight regulations and lack of capacity to deal with Southeast Florida's commodity base and coordination among federal agencies unique to Florida given size of the freight community.
Freight planning, investments and implementation (FDOT and Partners) for key infrastructure projects		Underutilization of marine waterways, highways, short shipping, barges, etc.
Freight forwarding community connecting with Latin America		Need to recognize value and contribution of Port of Miami River
Public private partnerships		Limited investment resources/\$\$
State legislative and executive leadership		Federal inspections services, underfunded.
Communication with partners and the public.		Lack of dedicated freight lanes
		Congestion that pits trucking and other traffic
		Logistics workforce development.
		Lack of warehouse space.

2-2

Future Conditions	Challenges
Assessing how US 27 south of I-4 can become the major north/south freight corridor to help bottlenecks in Southeast Florida.	
pooling of investments again, invest in increased shipping	Light synchronization issues across the region and impact on freight mobility.
Investment beyond rail and I-4 modes with a focus on all waterways	
Investment in increased trucking configurations.	
Investment in logistics centers.	
(also an challenge)	

### FMTP Responsive Approaches

Identifying sources, including public and private investments in region and state of sea and airports first, business, economic and environmental communities and on lessons from freight and logistics models elsewhere and conduct on site to understand the perspectives of private sector freight and trade users and

- Focus on competitiveness of the region and the state in terms of cost, speed, reliability, modal choice
- Include balancing of safety design standards with mobility
- Provide state support and market a central core of I-4, down the middle (spine) of the state as a manufacturing, distribution and transportation services corridor where there is existing capacity in terms of land and workforce.
- Consider incentives for locating potential distribution centers in disenfranchised and disadvantaged urban and rural areas as an economic development strategy.
- Encourage outreach to the international freight and trade community.

2-3

Video and summary document available soon at [www.freightmovesflorida.com](http://www.freightmovesflorida.com)

FLORIDA FREIGHT MOBILITY & TRADE PLAN

# CEO-Level Forum

This special session was intended to engage the senior leadership of:

- Companies presently located in the state
- Those we seek to encourage to locate in the state
- Others who can contribute to the economic growth of the state

Set up as a two-part exchange, this session discussed the outcomes of the Regional Listening Sessions and promoted similar discussions with these leaders within the freight community. This same group contributed to the plan's development by discussing specific freight topics to be addressed in the plan, and represents the beginning of an ongoing conversation between FDOT and statewide freight stakeholders.

Video and summary document available soon [\*\*www. freightmovesflorida.com\*\*](http://www.freightmovesflorida.com)



# Key Partners & Participants



FLORIDA FREIGHT MOBILITY & TRADE PLAN

# Plan Process

**Plan will be done in two phases:**

- **Policy Element** – due by *July 1, 2013*
  - Lays out overall freight policy direction and framework for freight investment decisions
  - Meets requirements of HB 599
- **Investment Element** –completion *July 1, 2014* (estimated)
  - Identifies and prioritizes freight needs across modes
  - Meets requirements of MAP-21

***Draft report*** due for comment: *March 1, 2014* (estimated)

***Final report*** due by: *July 1, 2014* (estimated)



# Promoting Florida's Responsive Freight Initiatives

## **We Listen....We Act**

- Truck size and weight harmonization
- Identifying and advancing work production \$22 million in “quick fixes” on Florida's SIS and NHS Intermodal Freight Connectors

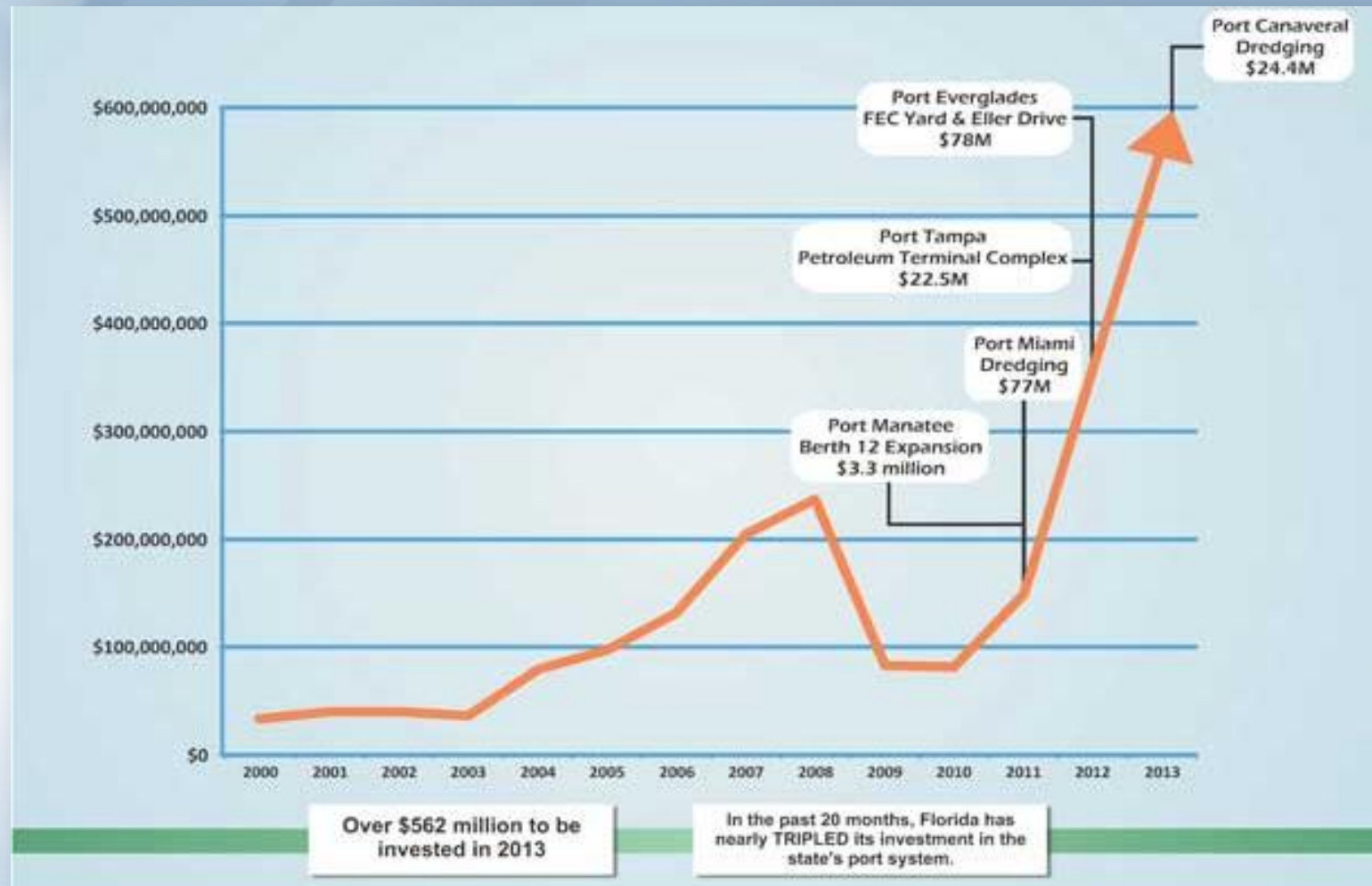
## **Advancing State Money to Make Strategic Port Investments Rather Than Wait For Federal Match That May Never Come**

- Port Miami: dredge, rail and tunnel
- Port Canaveral: channel widening, turning basin
- Port of Tampa: petroleum terminal, on-dock, rail

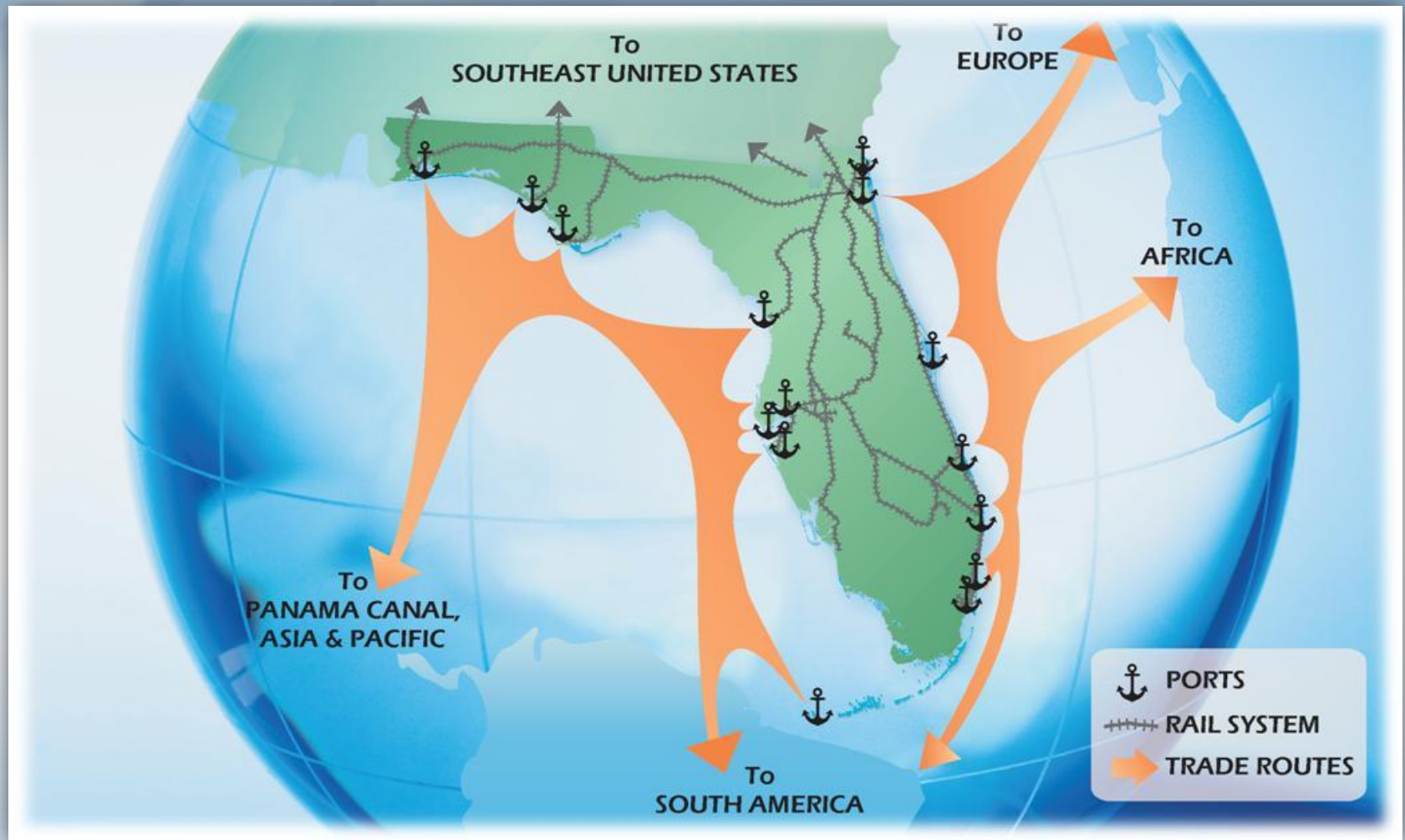
**Working closely with DEO, Enterprise Florida, Space Florida and Workforce Florida in aligning industry needs with efficient transportation connectivity**

**Instituting New Intermodal Logistic Center (ILC) Program**

# Florida Investing in International Trade



# Florida: America's Gateway to the World



# Passenger Rail

- **The Department is currently involved in the development of numerous public and private passenger rail systems**
  - **Tri-Rail in South Florida (W. Palm Beach – Miami)**
    - In service since 1988
    - Operated by South Florida Regional Transportation Authority
  - **SunRail (Orlando area)**
    - Anticipate service startup in 2014
  - **All Aboard Florida (Miami – Orlando)**
    - Privately developed/operated passenger service
      - Department working with developer
    - Early estimate is service startup in 2014

# All Aboard Florida

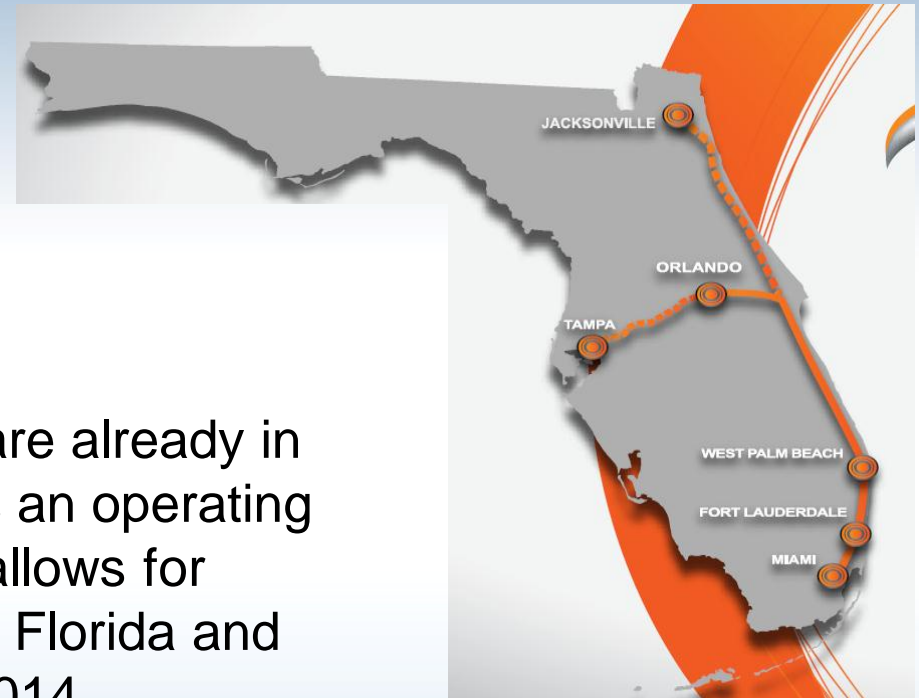
- Travelers want convenient, cost-efficient, fast and clean transportation
  - Florida East Coast Industries (FECI) is constructing a privately owned, operated and maintained passenger rail service that will be a solution for millions of Floridians and tourists.





# The Route

- The 240-mile passenger service route would run North-South on existing Right of Way from Miami to Cocoa, with new tracks built to connect to Orlando. We are also exploring plans to extend the route to Tampa and Jacksonville.
- 200 of 240 miles of Right of Way are already in place and have been in service as an operating railroad for over a century, which allows for passenger service between South Florida and Orlando to be up and running in 2014.



# Benefits

- A privately owned, operated and maintained passenger rail system will bring:
  - Taxpayer costs savings from reduced highway maintenance
  - Lower carbon emissions
  - Economic boost from new construction and operating jobs
  - Increased tourism
  - New transit-oriented development opportunities
  - Increased revenues from rising property values near stations, which can be used for local programs (schools, parks, public works, police and fire protection)

# FLORIDA

## Freight Mobility & Trade Plan

Questions?



FLORIDA DEPARTMENT OF TRANSPORTATION

2012 Florida Redevelopment Association  
Annual Conference | October 24-26, 2012

