

DREW PARK CRA



ADULT USE ENFORCEMENT



Purpose of Program

- To achieve and maintain compliance with City codes from adult businesses in Drew Park.
- Adult use enforcement is a high priority of the Drew Park CRA Community Advisory Committee, community stakeholders, & the Strategic Action Plan.
- Accomplished through Drew Park TIF allocation to Tampa Police Department for overtime personnel and other investigative costs to increase enforcement activity and obtain compliance.



Drew Park Adult Use Enforcement FY08 Budget

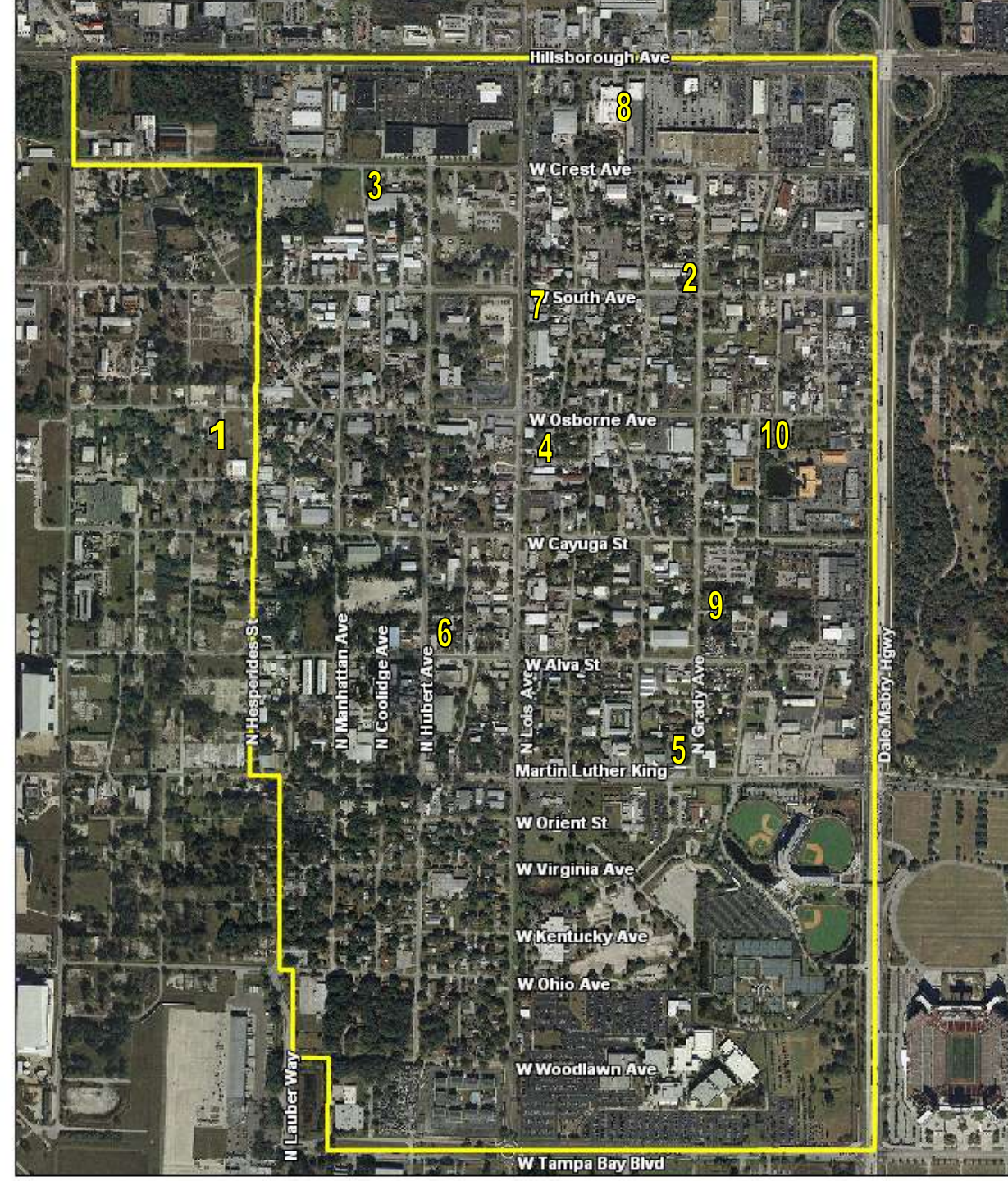
Personnel Costs	\$104,714
Rental Vehicles	\$14,400
Investigative Funds	\$13,600
TOTAL	\$132,714

Drew Park Adult Use Establishments

As of May 2008

Regulated

1. 4508 W Osborne Ave
2. 5006 N Grady Ave
3. 4322 W Crest St
4. 4715 N Lois Ave
5. 4900 W MLK Blvd
6. 4421 N Hubert St
7. 4829 N Lois Ave
8. 5215 N Lois Ave
9. 4613 N Grady Ave
10. 3910 W Osborne Ave

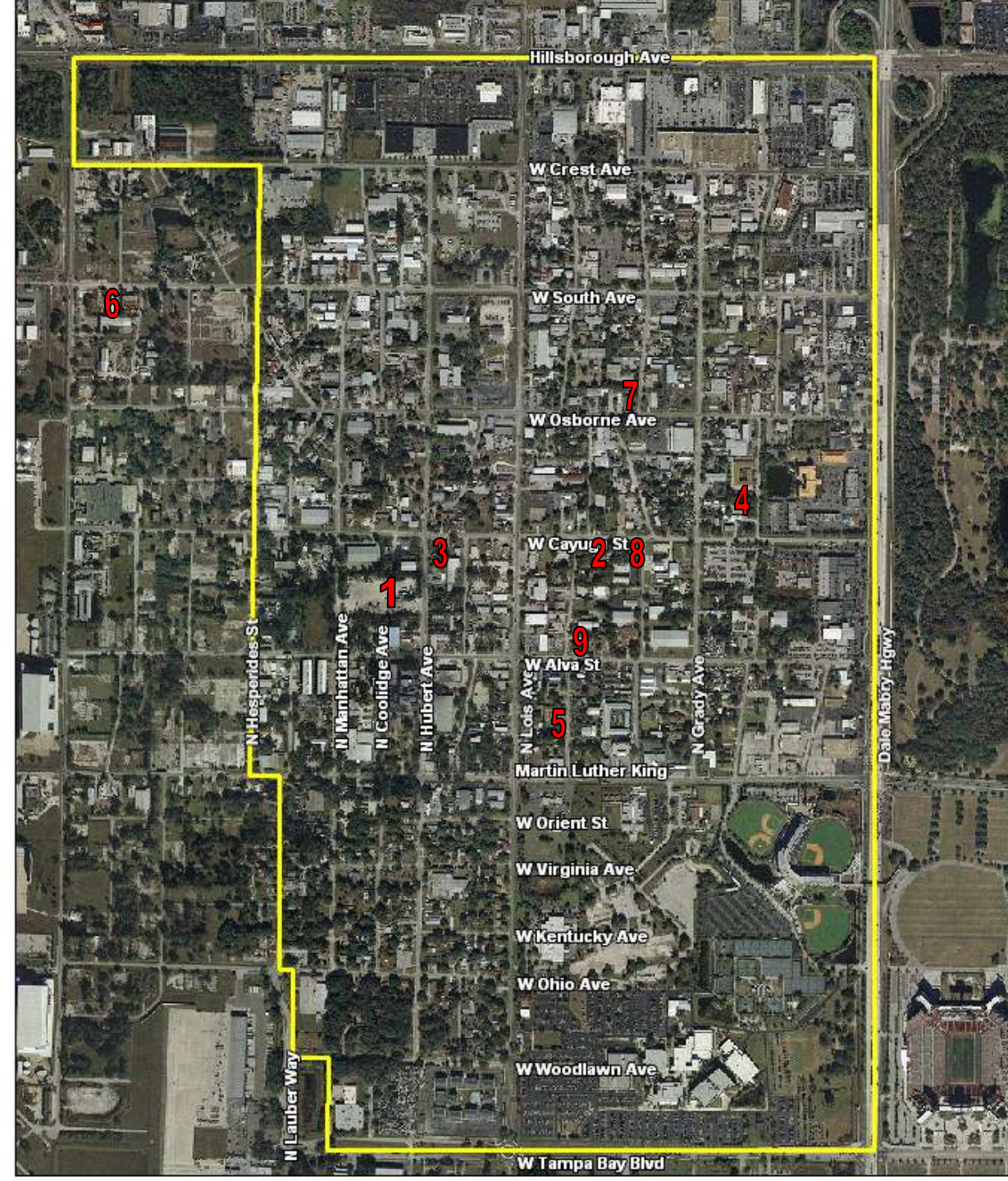


Drew Park Adult Use Establishments

As of May 2008

Non-Regulated

1. 4610 N Hubert Ave
2. 4022 W Cayuga St
3. 4220 W Cayuga St
4. 4710 N Cortez Ave
5. 4412 N Clark Ave
6. 4708 W South Ave
7. 4015 N Osborne Ave
8. 4010 W Cayuga St
9. 4023 W Alva St



Drew Park Adult Use Establishments

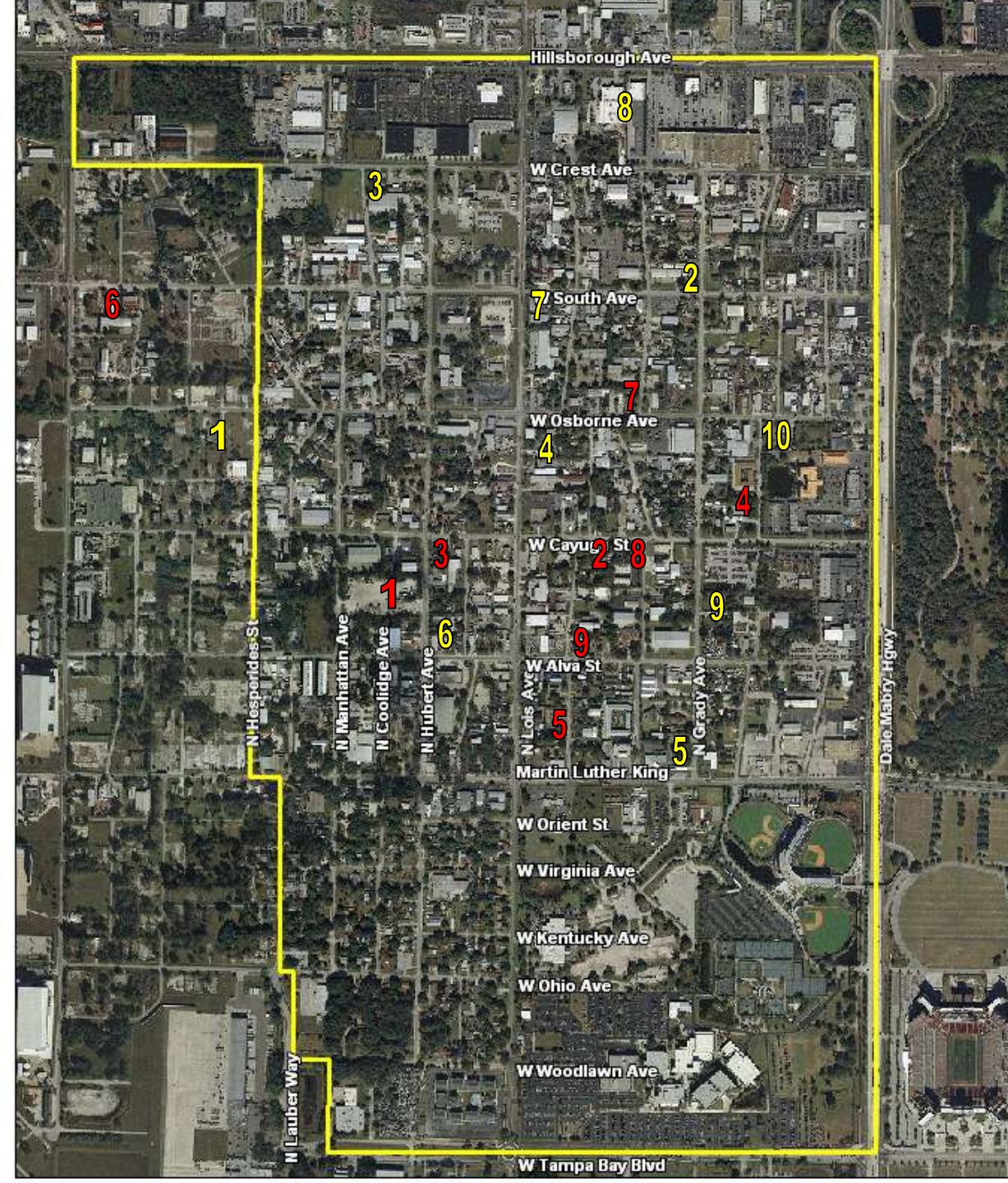
As of May 2008

REGULATED

1. 4508 W Osborne Ave
2. 5006 N Grady Ave
3. 4322 W Crest Ave
4. 4715 N Lois Ave
5. 4009 W MLK Blvd
6. 4421 N Hubert St
7. 4829 N Lois Ave
8. 5215 N Lois Ave
9. 4613 N Grady Ave
10. 3910 W Osborne Ave

NON-REGULATED

1. 4614 N Hubert Ave
2. 4022 W Cayuga St
3. 4220 W Cayuga St
4. 4710 N Cortez Ave
5. 4412 N Clark Ave
6. 4708 W South Ave
7. 4015 N Osborne Ave
8. 4010 W Cayuga St
9. 4023 W Alva St



Drew Park Adult Use Establishments

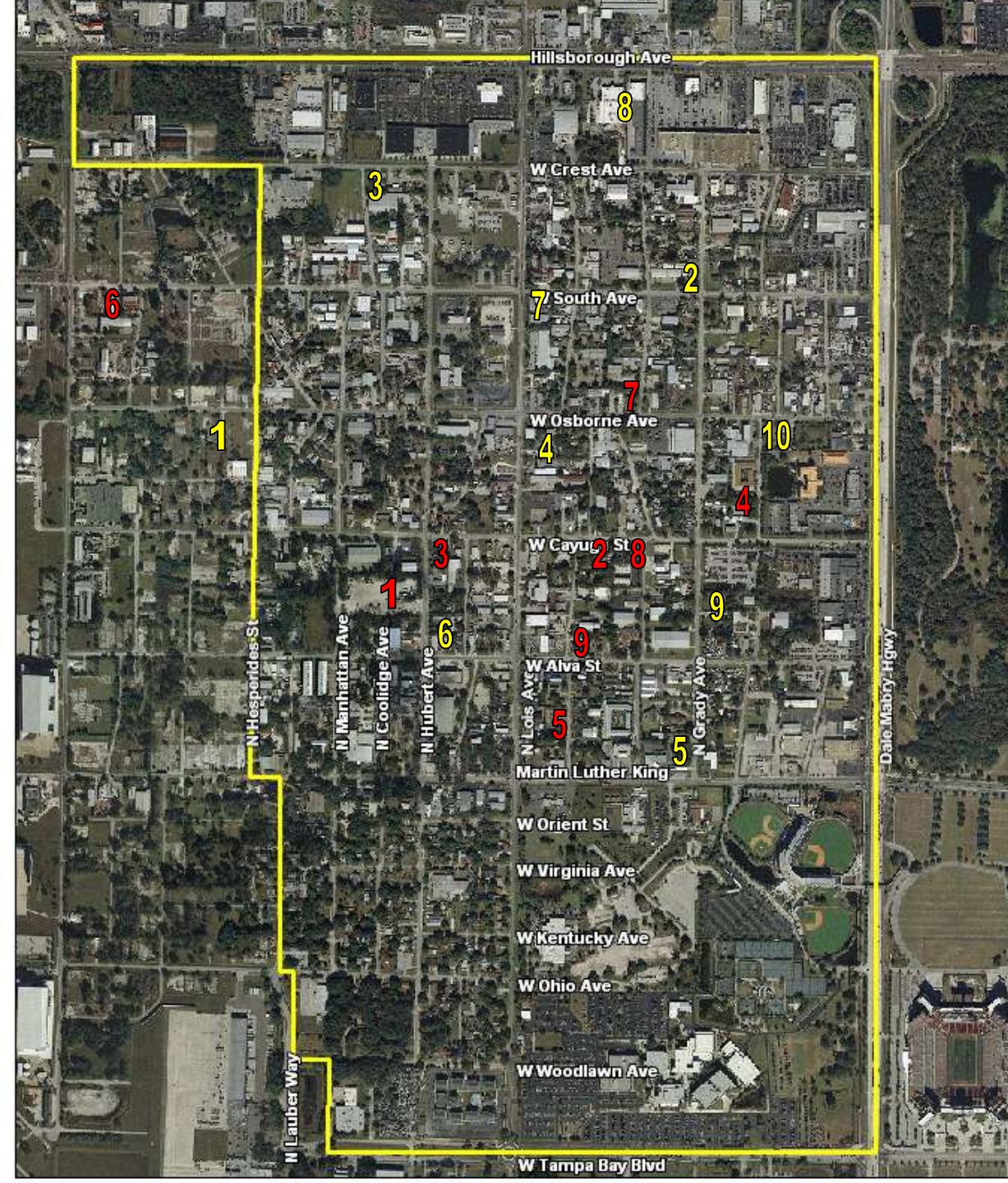
As of November 2008

REGULATED

1. 4508 W Osborne Ave
2. 5006 N Grady Ave
3. 4322 W Crest St
4. 4715 N Lois Ave
5. 4009 W MLK Blvd
6. 4421 N Hubert St
7. 4829 N Lois Ave
8. 5215 N Lois Ave
9. 4613 N Grady Ave
10. 3910 W Osborne Ave

NON-REGULATED

1. 4614 N Hubert Ave
2. 4022 W Cayuga St
3. 4220 W Cayuga St
4. 4710 N Cortez Ave
5. 4412 N Clark Ave
6. 4708 W South Ave
7. 4015 N Osborne Ave
8. 4010 W Cayuga St
9. 4023 W Alva





Status of the non-regulated businesses **as of November 19, 2008**

4022 W. Cayuga St.:	Closed Current site of Hoffman Brickyard
4220 W. Cayuga St.:	Closed for lease
4412 N. Clark Ave.:	Closed for lease
4708 W. South Ave.:	Closed vacant
4015 N. Osborne Ave.:	Closed for lease
4710 N. Cortez Ave.:	Closed vacant/boarded up
4023 W. Alva St.:	Closed for lease/sale
4010 W. Cayuga St.:	Closed for lease
4614 N. Hubert Ave.:	Closed for lease

New Business

- 4022 W. Cayuga St.
- Previously Exotic Angels
- Currently Hoffman Brickyard



Drew Park Arrest Statistics

May 4-November 19, 2008

<u>Non-Regulated (Lingerie Shops)</u>	<u># of Arrests</u>
4614 N. Hubert Ave.	7
4023 W. Alva St.	2
4220 W. Cayuga St.	1
4710 N. Cortez Ave.	3
4015 N. Osborne Ave.	5
4010 W. Cayuga St.	7
<u>Regulated</u>	<u># of Arrests</u>
4421 N. Hubert St.	22
4613 N. Grady Ave.	3
4009 W. MLK Blvd.	2
4715 N. Lois Ave.	21
3910 W. Osborne Ave.	2
4322 W. Crest St.	5
5215 N. Lois Ave.	11
Other Drew Park arrests	45 (including narcotics & Counterfeit merchandise)
Quality of Life: (Open container)	17
Criminal Traffic:	10
Street Checks:	8 (not included in arrests)
Total Arrests:	163

Playhouse Theatre

- 4421 N. Hubert St.
- 22 arrests have been made at this location since the inception of the program.



Fantasy Land

- 4715 N. Lois Ave.
- 21 arrests have been made at this location since the inception of the program.





Future Action

- Continued monitoring and enforcement to assure compliance.
- Track overall crime statistics in Drew Park and reuse of former adult business locations to determine impact of adult use enforcement program.





Questions

