

**Michael D. Rosen &
Associates, LLC
Real Estate Development
Advisors & Construction
Managers**

239-450-0969

Village Walk

&

Island Walk

Naples FL 1993 - 1995

Future Town of Big Cypress

20??

The “Village Walk” Community:

- **Inspiration**
- **Design Concepts**
 - **Site Plan**
 - **Town Center**
- **Home Owners Buy-In**
- **Management**
- **Lessons Learned**
- **Adjustments**

Island Walk (Divosta’s Flagship Community)

Town of Big Cypress

Site Plan for a typical Walk project











Town Center Amenities

Fitness center

Resort pool

Lap pool

8 lighted tennis courts

Lighted basketball court

Bocce ball courts

Tot lot playground

Lakeside gazebo

Car wash

Gas pumps

Restaurant

Post office

Beauty salon and boutique

Bank

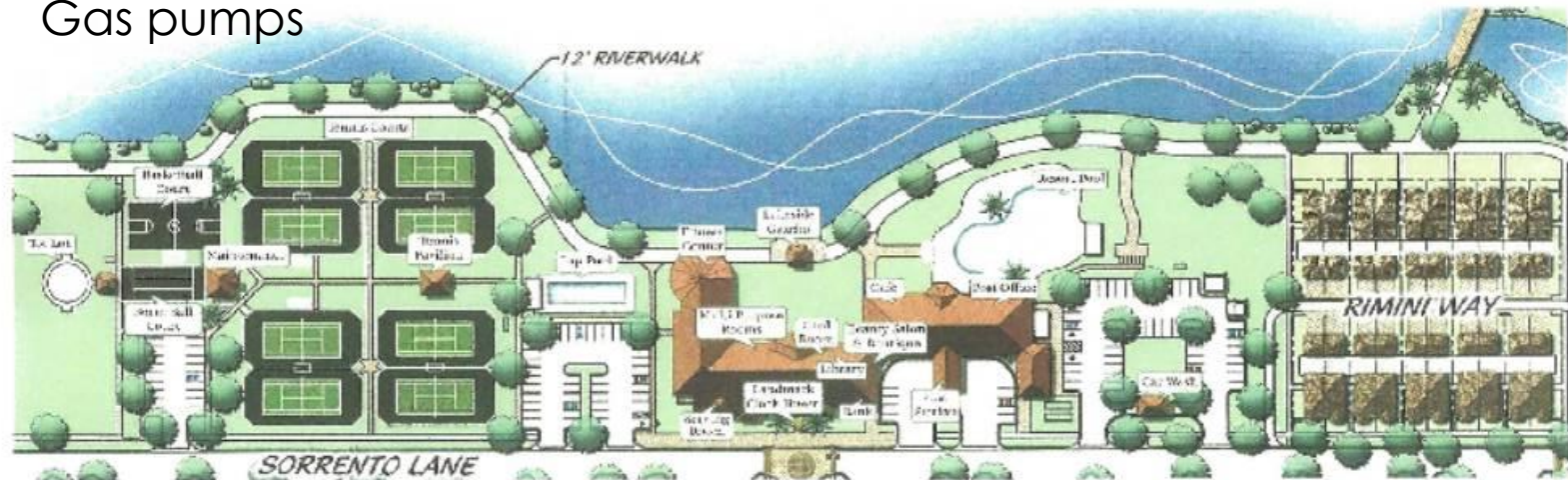
Activity rooms

Library

Catering Kitchen

Travel agency

Convenience store





Town Center





Car Wash

Gas Station



**Bank, Beauty
Salon and Nail
Salon**



Restaurant



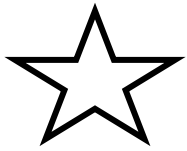




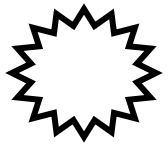
Lifestyle



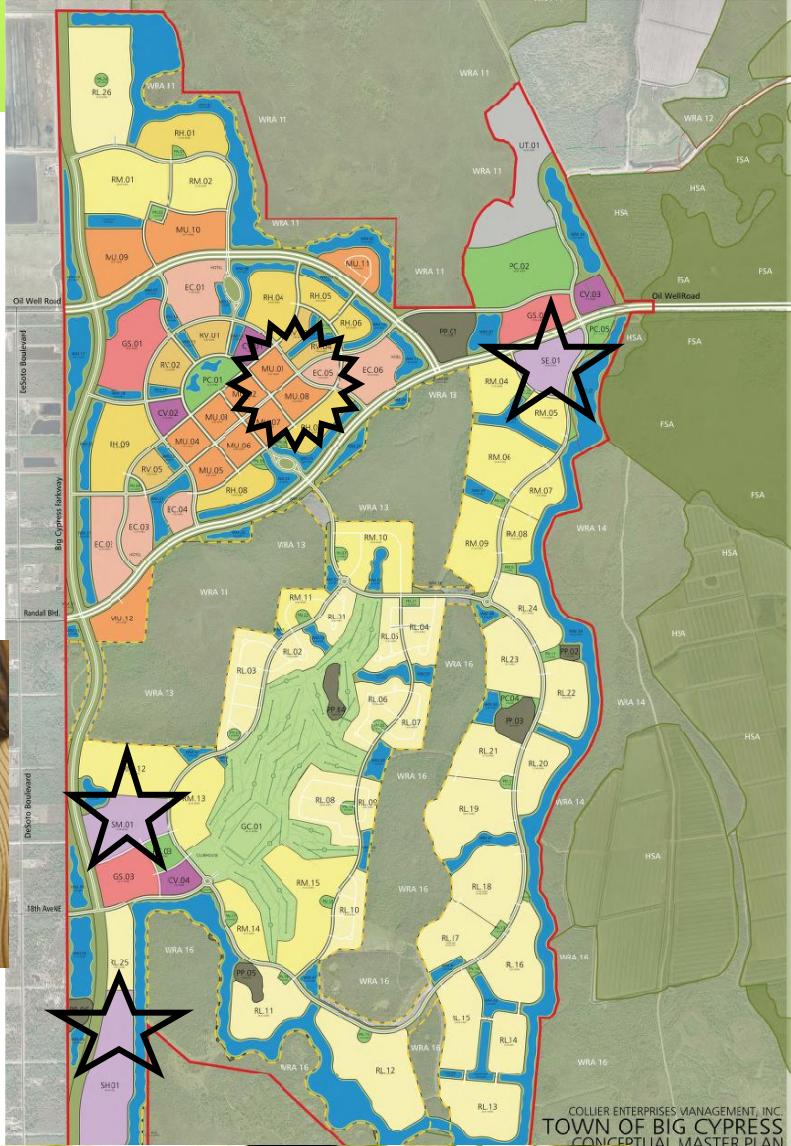
Education



Schools



Higher Education



Community Parks



Goods and Services



10.08.2007

The Paradigm Shift in Development

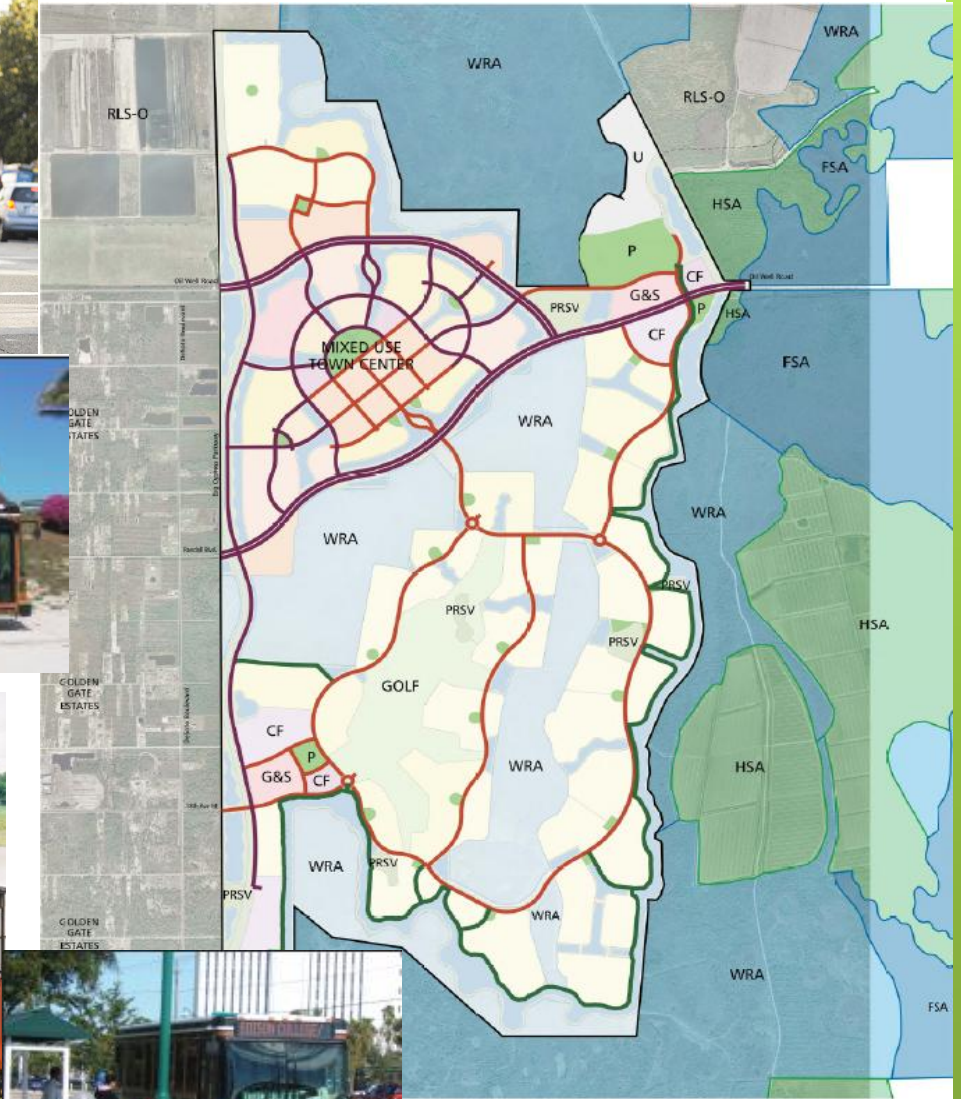


DO NOT COPY OR REDISTRIBUTE THIS IMAGE WITHOUT CONSENT FROM ITS CREATOR.



Florida
**Green Building
Coalition, Inc.**

Alternative Transportation



LEGEND

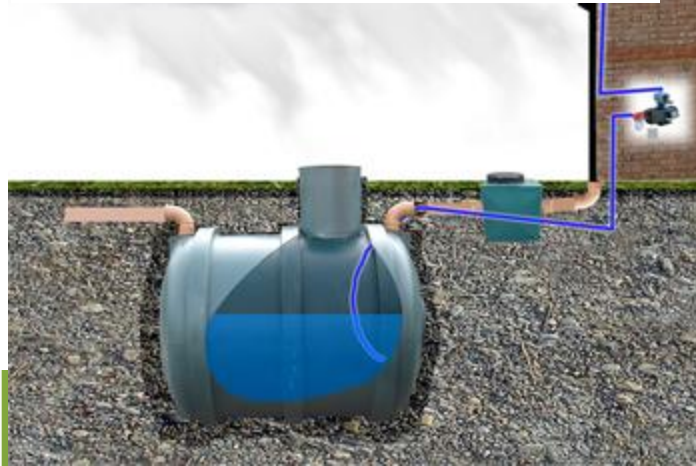
- 10' MULTI-USE WALK
- 6' SIDEWALK

Florida Green Building Coalition Green Development Certification



A close-up of a LEED Green Building Rating System scorecard. The top section shows '32 Points Achieved' and 'Possible Points: 15'. Below this, a table lists various sustainability categories and their corresponding points.

Category	Points
Sustainable Sites	7
Erosion & Sedimentation Control	1
Site Selection	1
Development Density	1
Brownfield Redevelopment	1
Alternative Transportation, Public Storage & Changing Rooms	1
Alternative Transportation, Bicycle Storage & Changing Rooms	1
Alternative Transportation, Alternative Capacity	1
Alternative Transportation, Protect or Restore Open Space	1
Alternative Site Disturbance, Development Footprint	1
Reduced Site Disturbance, Pave and Quality	1
Water Management, Treatment	1
Water Management, Non-Roof	1



Native Tree Farm



Water Resources



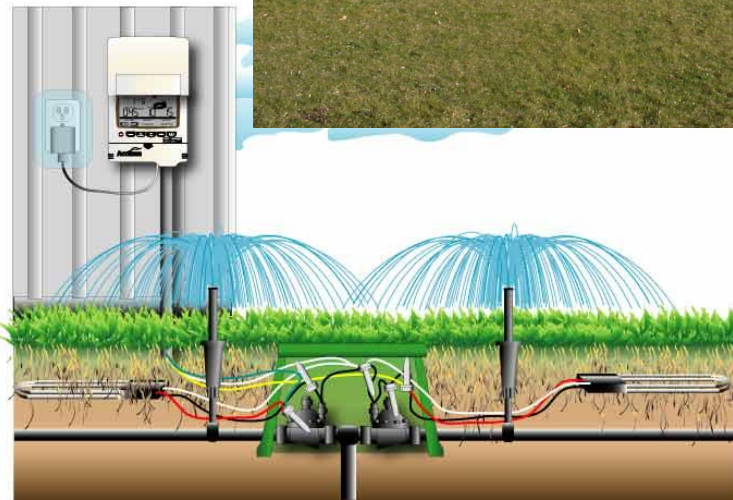
2 Information gathered from weather stations is transmitted through satellites to the Intelli-Sense controller.



We're using water wisely by irrigating with reclaimed water



Please don't drink the water



Solid Waste



An Example of an Activated Sludge Tank at a Wastewater Treatment Plant

The Sludge Generated from Treating Wastewater is Used to Make Biosolids

Wastewater treatment plants in the United States generate approximately 7 million dry tons of sludge each year

A Biosolids Holding Area Where Biosolids are Loaded onto Dump Trucks to be Transported to Agricultural Fields for Use as Fertilizer



Biosolids



Solar Initiative



Organic Farming and Market



Recreation and Exploration



**Michael D. Rosen &
Associates, LLC
Real Estate Development
Advisors & Construction
Managers**

239-450-0969